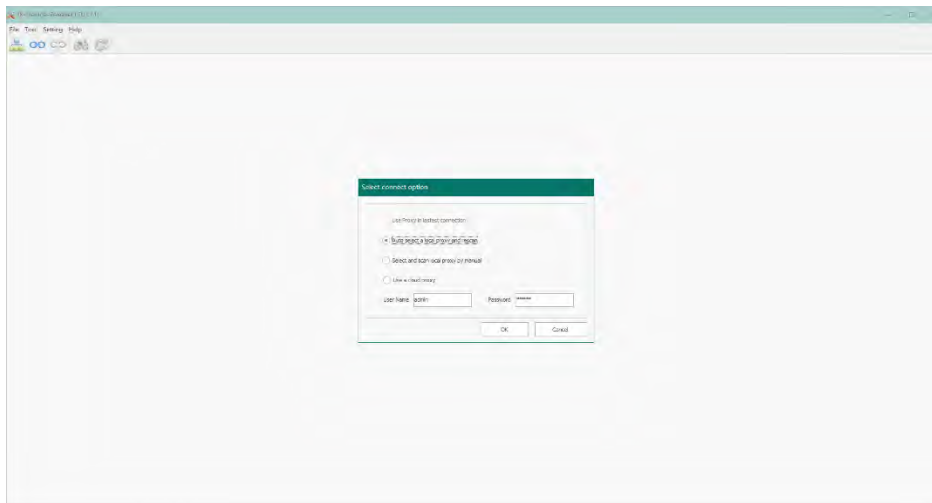


# Instruction of IX-Device

1. Preparation .....	1
2. Interface introduction .....	3
Title Bar .....	3
Tree Structure Diagram.....	3
The extension.....	3
3. Functions.....	4
3.1 RING .....	4
3.2 Get Information .....	5
3.3 Program Nbr.....	5
3.4 Program IP.....	6
3.5 Reboot.....	6
3.6 Firmware Batch Updates .....	6

## 1. Preparation

**Step 1,** Download the software from the website page, unzip the downloaded file, open the unzipped folder and double click "IXP\_Device.exe" to load the program.



**Step 2,** Choose the **Select connect option**

Select the following four methods according to actual needs to enter the product list search interface of the system

- **Use Proxy in latest connection:** When the management of the same project is applied for the second or more times, select this option to enter the version entered last time
- **Auto select a local proxy and rescan:** When the PC is connected to the same LAN of the system, select any product as the local proxy and scan&list all the device information.
- **Select and scan local proxy by manual:** When the PC is connected to the same LAN of the system, select one Specified Product as the local proxy via manual input ID & Password
- **Use a cloud proxy:** When the system is networked, remotely control and manage the system via a cloud proxy, manual input one Specified Product ID & Password (Incomplete, please use local proxy)
- **User Name // Passwords:** Administrator access account and password

At this stage, only monitor can be selected to be local proxy!  
And actually it is the IP address of this monitor will be bound to the system when work as local proxy --- That means, if you change the IP address of the monitor / local proxy, will cause IX-DEVICE disconnected. But if you change anything else of this monitor like Device\_Addr, IX-DEVICE will be still connected to the system for programming.

use local proxy or cloud proxy via manual input, see below image.

*Note: Only new IX471S, IX482, IX470 can support cloud proxy, for old IX471 can only support local proxy. This function is under development, please use local proxy at this stage.*

Cloud Server	47.106.104.38
Port	
Account	VTKRemoteTest
Acct Password	*****
Proxy ID	04001c134fa3
Proxy Password	*****

- **Cloud Server:** Enter the cloud server / check it on SIP Configure page of IP monitor
- **Port:** default
- **Account:** default
- **Acct Password:** default
- **Proxy ID:** Local account of IP monitor
- **Proxy Password:** Local PWD of IP monitor

**Step 3,** After connecting successfully, all devices in the same IP system will show up

The screenshot shows the 'All Device' table with the following data:

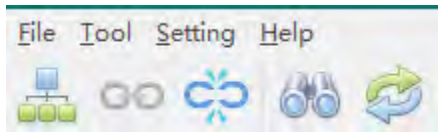
ID	RD_BM_M5	RD_Nbr	RM_Nbr	MS_Nbr	Name	Device Model	Device Type	IP Policy	IP_Addr	Operation
00991000101	0099	0000	01	0X802	-2	DS	DHCP & Auto	192.168.50.87	Operation	Ring, Get Information, Prog Nbr, Prog IP Address, Parameter, Setup Utility, Reboot, FW Upgrade, Download Res
009910001101	0099	0001	01	3P22092	IX471S	DM	DHCP & Auto	192.168.50.118	Operat	
009910001101	0099	0001	03	IX470	IX470	DM	DHCP & Auto	192.168.50.109	Operat	
009910002011	0099	0002	01	a	IX482	DM	DHCP & Auto	192.168.50.104	Operat	

A red arrow points to the 'Setting' icon (a gear) at the bottom left of the interface, with the text: "Click 'Setting' icon to enter the table".

## 2. Interface introduction

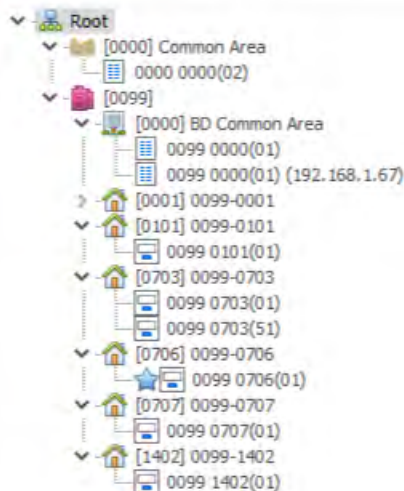
The main interface is divided into three parts: Title bar, Tree Structure Diagram, and The extension

### Title Bar



### Tree Structure Diagram

On the left side of the interface is a system preview bar with a tree structure, which can display all online equipment by project and product category.



- means "Common Area" (CDS+CGL)
- means "building" or "system"
- means "BD common area" (BDS+BGL)
- means "room" (Indoor monitor)

**i** The corresponding online equipment will be displayed under each directory.  
and show its own RM\_Nbr. ( full digits, 10)  
ordering rule: CDS → Building 1 - N (inside listed Indoor monitors) → Accessories

### The extension

Clicking on and chose any item will display all the information about that item on the right.

For example,

if clicking on ,it will display the details of all the items under this project.

If clicked on , all indoor monitors in the room will be displayed.

[0001] 0099-0001

Selected	State	BD_ID	BD_MFG	BD_Nbr	MFG_Nbr	Name	Name2	Device Model	Device Type	Local Vbr	Global Vbr	IP Policy	IP_Addr	IP_Mask	IP_Gateway	MFG_SN	Brief
<input type="checkbox"/>	Normal	0099-0000(0)	0099	0001	01	D1462		D1462	DN			DHCP & Auto	192.168.243.119	255.255.255.0	192.168.243.200	D40010a602	
<input type="checkbox"/>	Normal	0099-0000(0)	0099	0001	01	D1462		D1462	DN			DHCP & Auto	192.168.243.42	255.255.255.0	192.168.243.200	D40010a607	
<input type="checkbox"/>	Normal	0099-0000(0)	0099	0001	01	D1462		D1462	DN			DHCP & Auto	192.168.243.41	255.255.255.0	192.168.243.200	D40010a608	
<input type="checkbox"/>	Normal	0099-0000(0)	0099	0001	01	DOORVIC10-05		D1471	DN			DHCP & Auto	192.168.243.34	255.255.255.000	192.168.243.200	D40010a419	
<input type="checkbox"/>	Normal	0099-0000(0)	0099	0001	02	D1462		D1462	DN			DHCP & Auto	192.168.243.40	255.255.255.0	192.168.243.200	D40010a609	

The title bars of this page can be sorted and filtered vertically by a click, and can also be dragged to change the front and back positions, so as to facilitate better viewing of information.

Except the below items, the others are all can edit and manage.

State // Device Model// Device Type//MFG\_SN

### 3. Functions

#### 3.1 RING

It Helps to find and location the item.

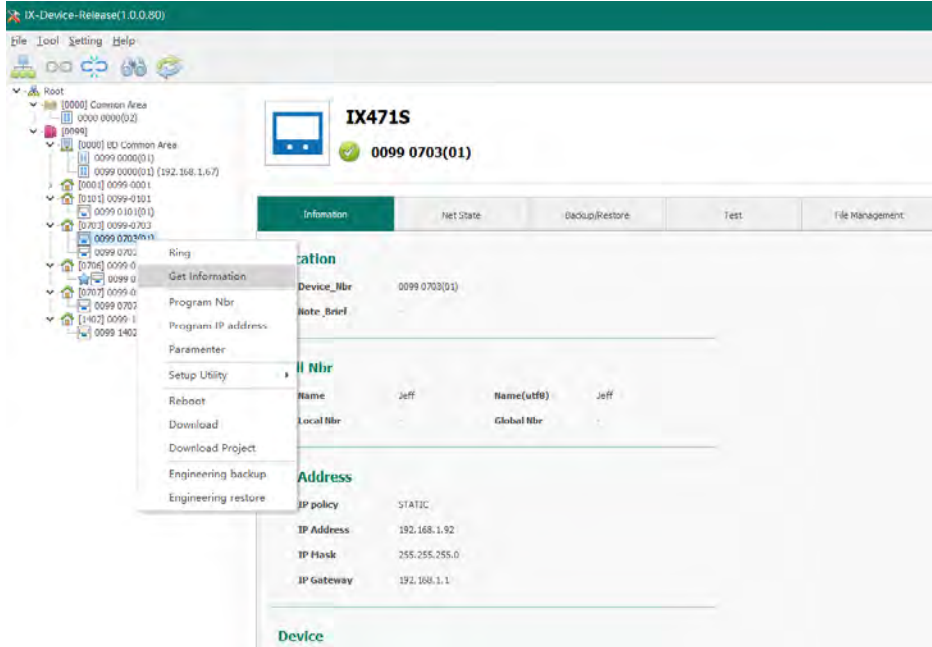
On IX-Device, using the RING function, you can send a sound and a text message to the selected device (door station or indoor monitor)

Operation: In the Tree Structure Diagram on the left, select the device, right click, and select "Ring"

The image shows a tree structure diagram on the left and a dialog box on the right. The tree structure diagram is a hierarchical view of a system. It starts with a 'Root' node, which branches into '[0000] Common Area' and '[0099]'. Under '[0099]', there is a sub-tree for '[0000] BD Common Area', which further branches into '0099 0000(01)', '0099 0000(01) (192.168.1.67)', and '[0001] 0099-0001'. The '[0001] 0099-0001' node is selected, and a context menu is open over it. The context menu has the following items: 'Ring', 'Get Information', 'Program Nbr', 'Program IP address', 'Parameter', 'Setup Utility', 'Reboot', 'Download', 'Download Project', 'Engineering backup', and 'Engineering restore'. The 'Ring' item is highlighted. To the right of the tree structure diagram is a dialog box titled 'Input Ring Message'. The dialog box has a green header bar with a red 'X' icon in the top right corner. Below the header bar is a text input field labeled 'Message'. At the bottom of the dialog box are two buttons: 'OK' and 'Cancel'.

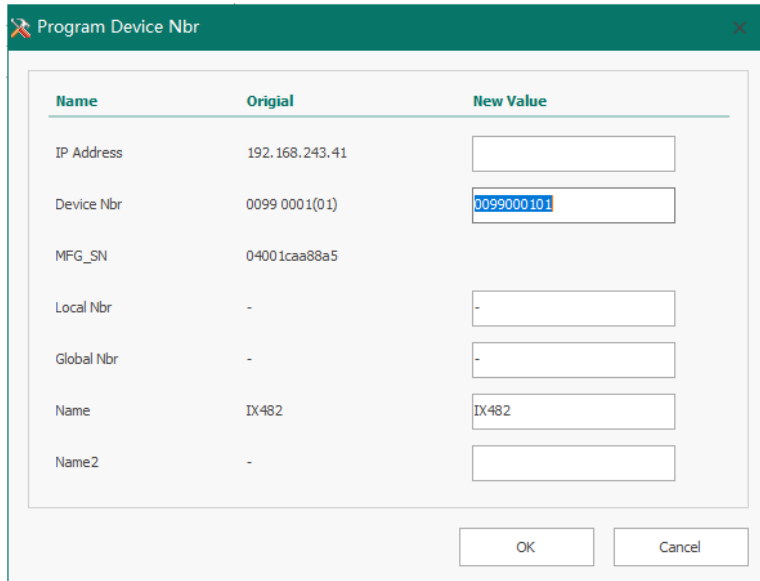
### 3.2 Get Information

In the Tree Structure Diagram on the left, select the device, right click, and select “get information“, You will get all details of this device with page info.



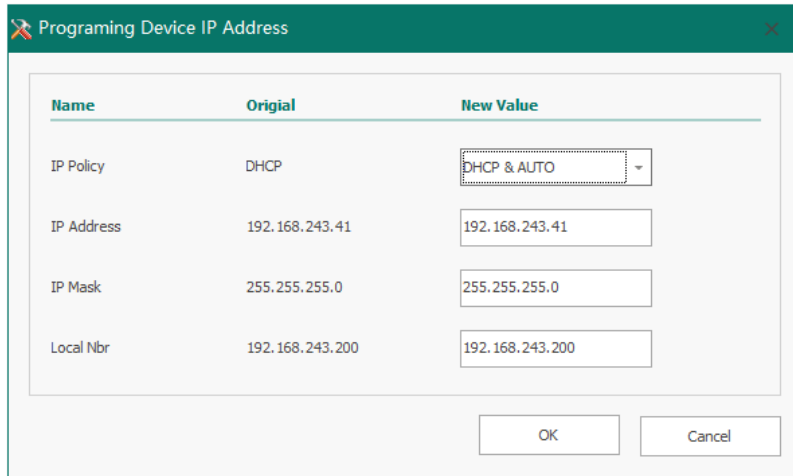
### 3.3 Program Nbr

In the Tree Structure Diagram on the left, select the device, right click, and select “Program Nbr“



### 3.4 Program IP

In the Tree Structure Diagram on the left, select the device, right click, and select “Program IP address”



### 3.5 Reboot

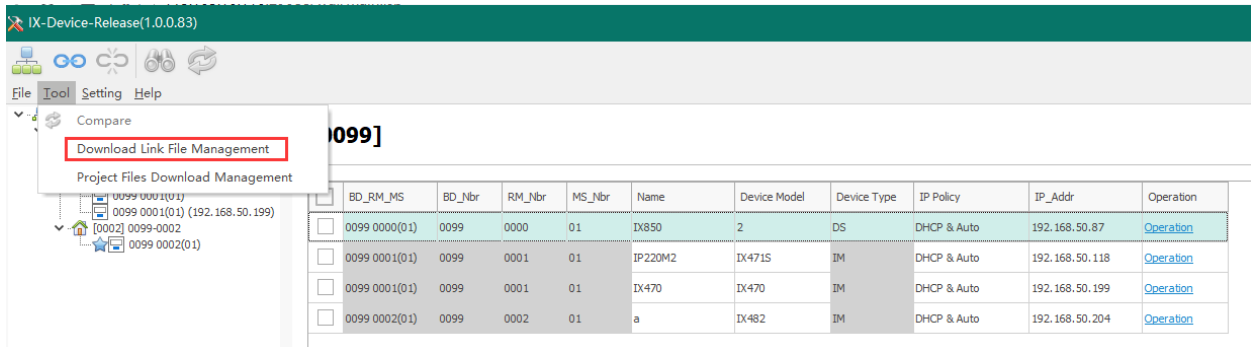
In the Tree Structure Diagram on the left, select the device, right click, and select “Reboot”

### 3.6 Firmware Batch Updates

Batch updates are really recommended when doing larger updates. The process is: Create download link of a certain IP model / device -> Filtrate and select all the devices (Same model) -> Start the Batch Updates

#### 3.6.1 Create download link

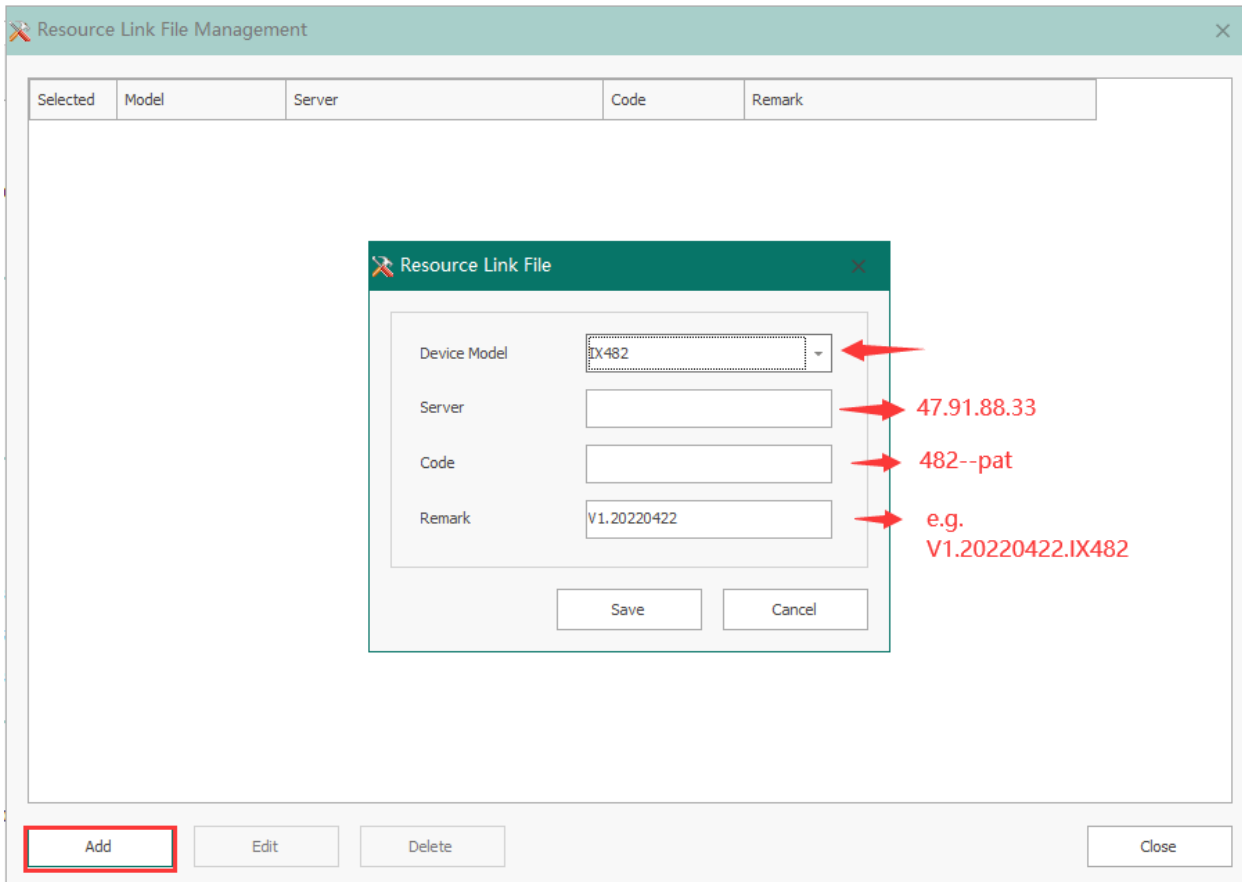
Step 1, click “Tool” -> Download link file management



Step 2, click “Add” to create and save a download link, for batch updates.

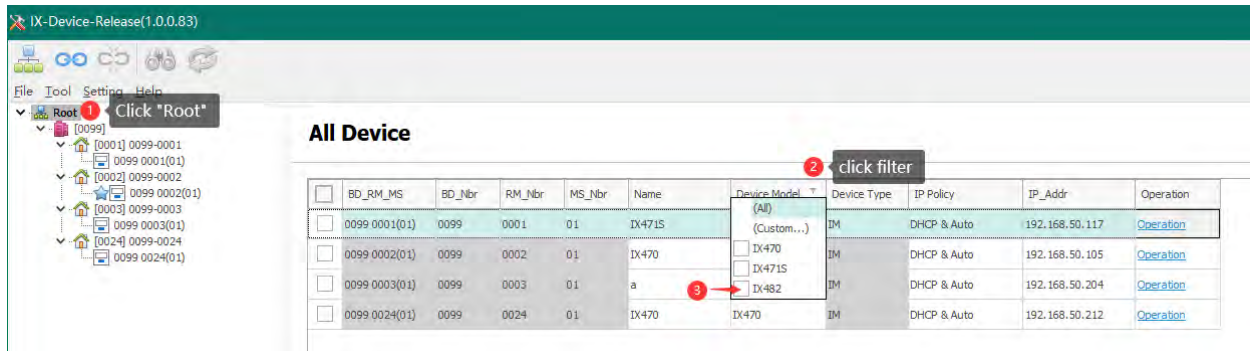
- Device Mode: click and choose the device model, such as IX471, IX471S, IX470, IX482. This selected model will be updated in bulk.
- Server: Input the SIP server, it is Germany server (47.91.88.33) by default. V-Tek will upload the firmwares to this SIP server in advance.
- Code: Each model will have its “download code”, please get this code from V-Tek, to make sure it is linked to latest firmware of certain model.
- Remark: It is the name of download link

For example, to create a download link named “V1.20220422.IX482”, for all IX482 in the same system.



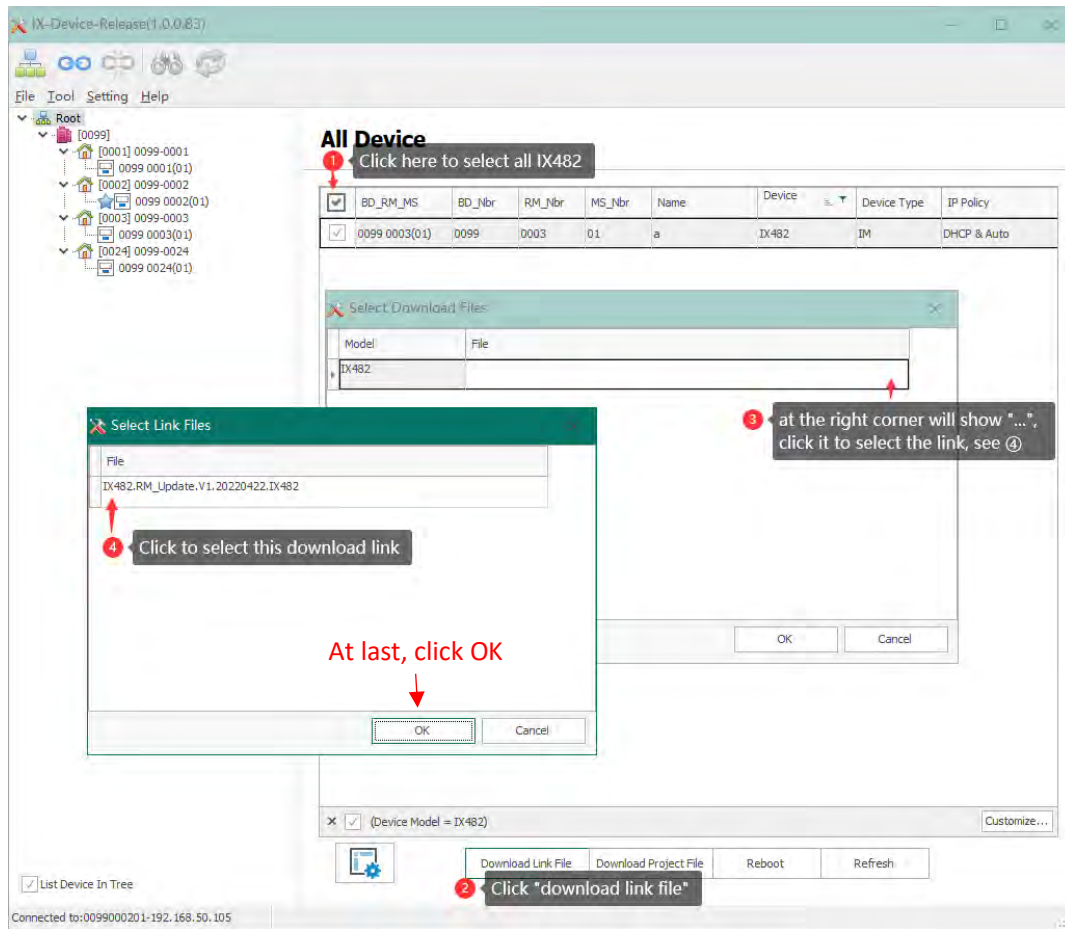
### 3.6.2 Filtrate and select all the devices (Same model)

For example, select all IX482.



### 3.6.3 Start the Batch Updates

Step 1, Select the download link (already created in 3.6.1)



At last, click ok, then will start the batch updates.

