

3. Copy the Namelist file to SD card by computer.



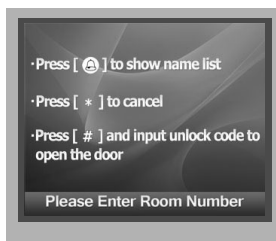
4. Select 4 to enter **Namelist update**, the information of "update ready" will be showed.



5. Insert the SD card to slot, the information of "Download..." will be showed when the updated is in progress. After 3 seconds, a long sound "BP+" will be heard to start the updated.



6. When update is finished, it will return to **Standby Mode** interface.



7. Press touch button to show the Name list

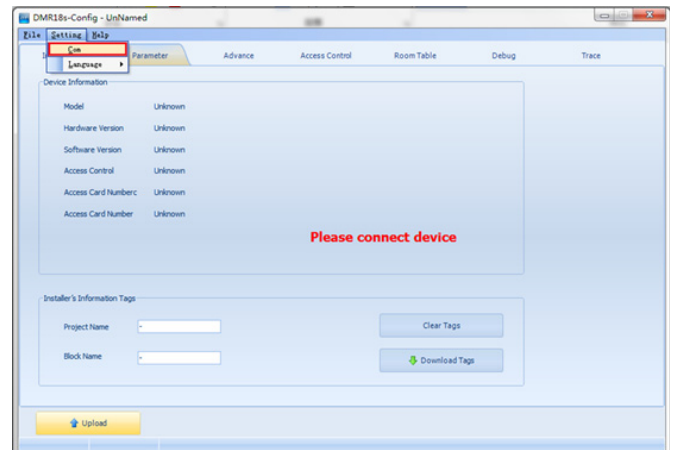


### 2) Namelist update by DT-Config

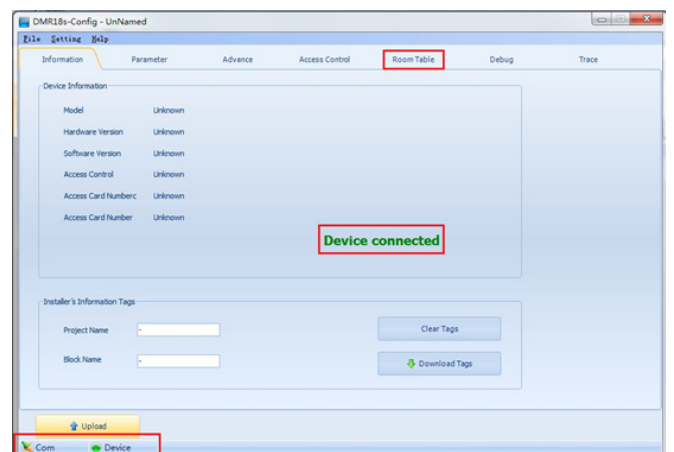
DMR18S-Config software is for parameters setting, namelist setting etc. It is great convenience to installation.

The DMR18S-Config software operation is as follows:

1. Open "DMR18S-Config" software, connect DMR18S to PC via USB-RS-485; Click "Setting" on the menu bar then click Com to select right Com. (Com information can be found in "My Computer -> Properties -> Device Manager -> Ports")



2. Then if DMR18S is connected to PC successfully, one tips of "Device connected" will be showed. Click "Room Table" tab to edit Name list.)



3. Then click "Insert" to create the first item.

**Each item have 5 different properties:**

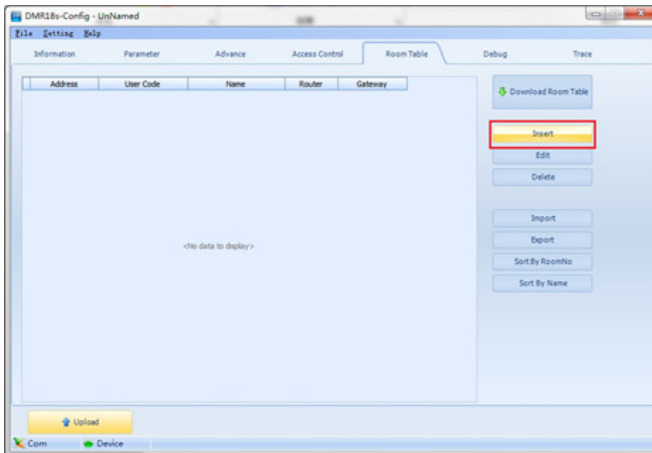
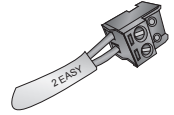
**Address:** Monitor's address (can be find in "about");

**User Code:** The number you can dial to the monitor;

**Name:** The name of resident;

**Router:** Set the BDU address when it is in Router mode;

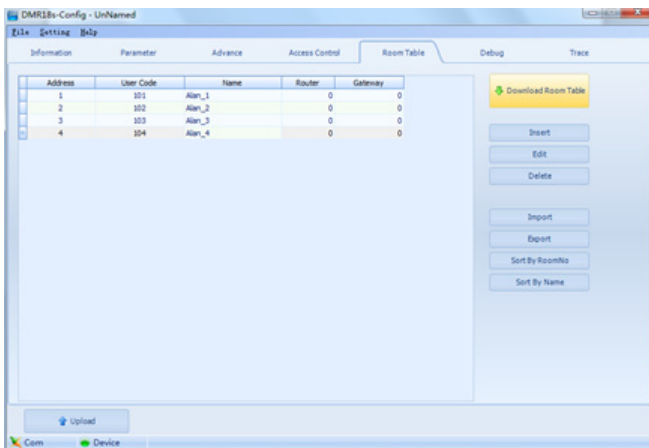
**Gateway:** Set the BDU address when it is in Gateway Mode.



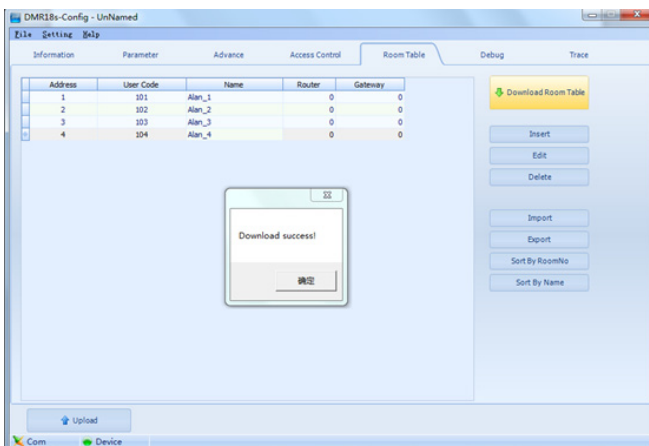
#### 4. Edit Namelist

##### 4.1 Apartments

- For example: Dial 101 to call the Apartment 01 without BDU. See the following picture shows:



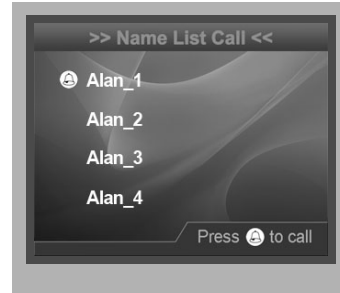
- After edited, click "Download Table" to download Name List to DMR18S; After a few seconds, a window will be displayed if it is updated successfully.



- Check Name List on DMR18S

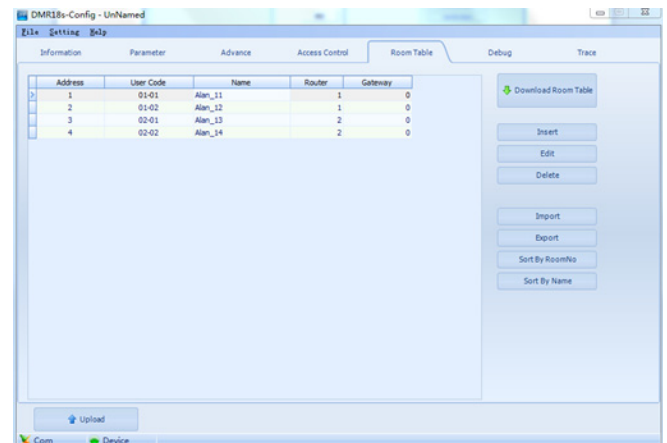
Set the DMR18S **Work Mode** as 0 (more details refer to **Work Mode** setting section).

- Press touch button to enter **Name List** page. See the following picture shows.

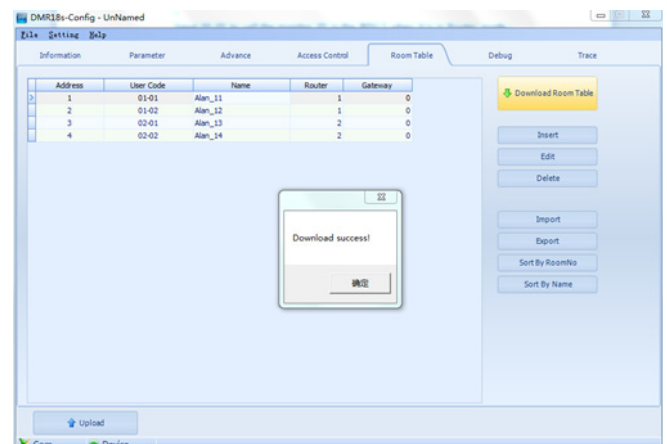


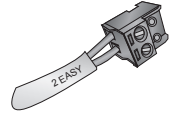
##### 4.2 Router

- Input 01-01 to call the monitor 01 in the BDU 1 when it is in **Router mode**, And input 02-02 to call the monitor 02 in the BDU 2 when it is in **Router mode**, see the following picture:




- Click Download Room Table to download the namelist.

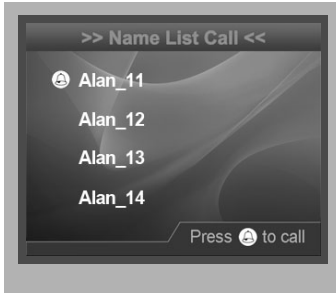




- Check Name List on DMR18S

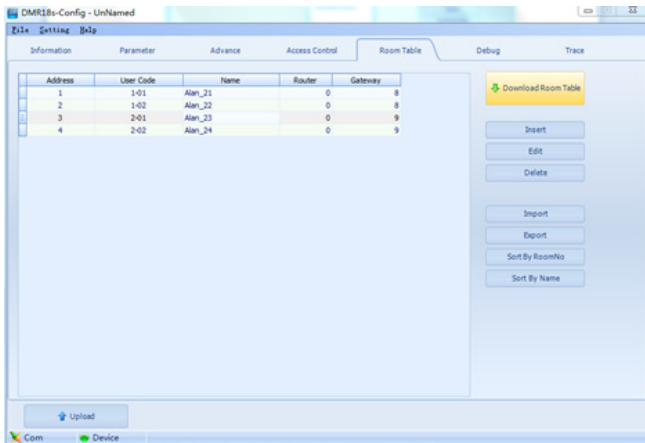
Set the DMR18S **Work Mode** as 2 (more details refer to **Work Mode** setting section).

- Press  touch button to enter **Name List** page. See the following picture shows.

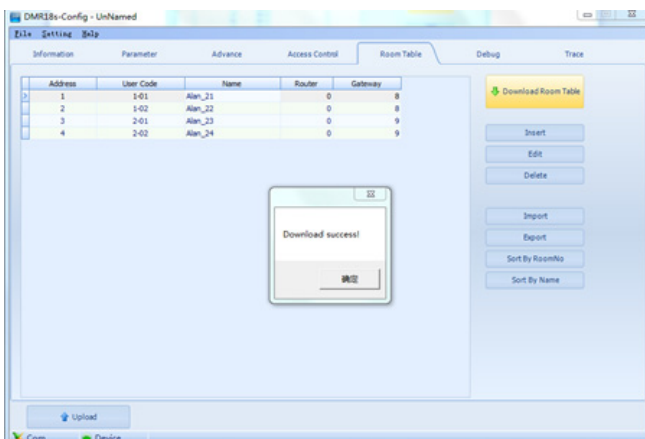


### 4.3 Gateway

- Input 1-01 to call the monitor 01 in the BDU 1 when it is in **Gateway** mode, And input 2-02 to call the monitor 02 in the BDU 2 when it is in **Gateway mode**, see the following picture:



- Click Download Room Table to download the namelist.



- Check Name List on DMR18S

Set the DMR18S **Work Mode** as 3 (more details refer to **Work Mode** setting section).

- Press  touch button to enter **Name List** page. See the following picture shows.

