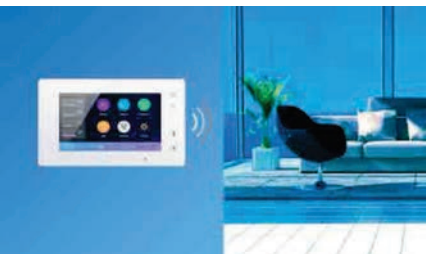


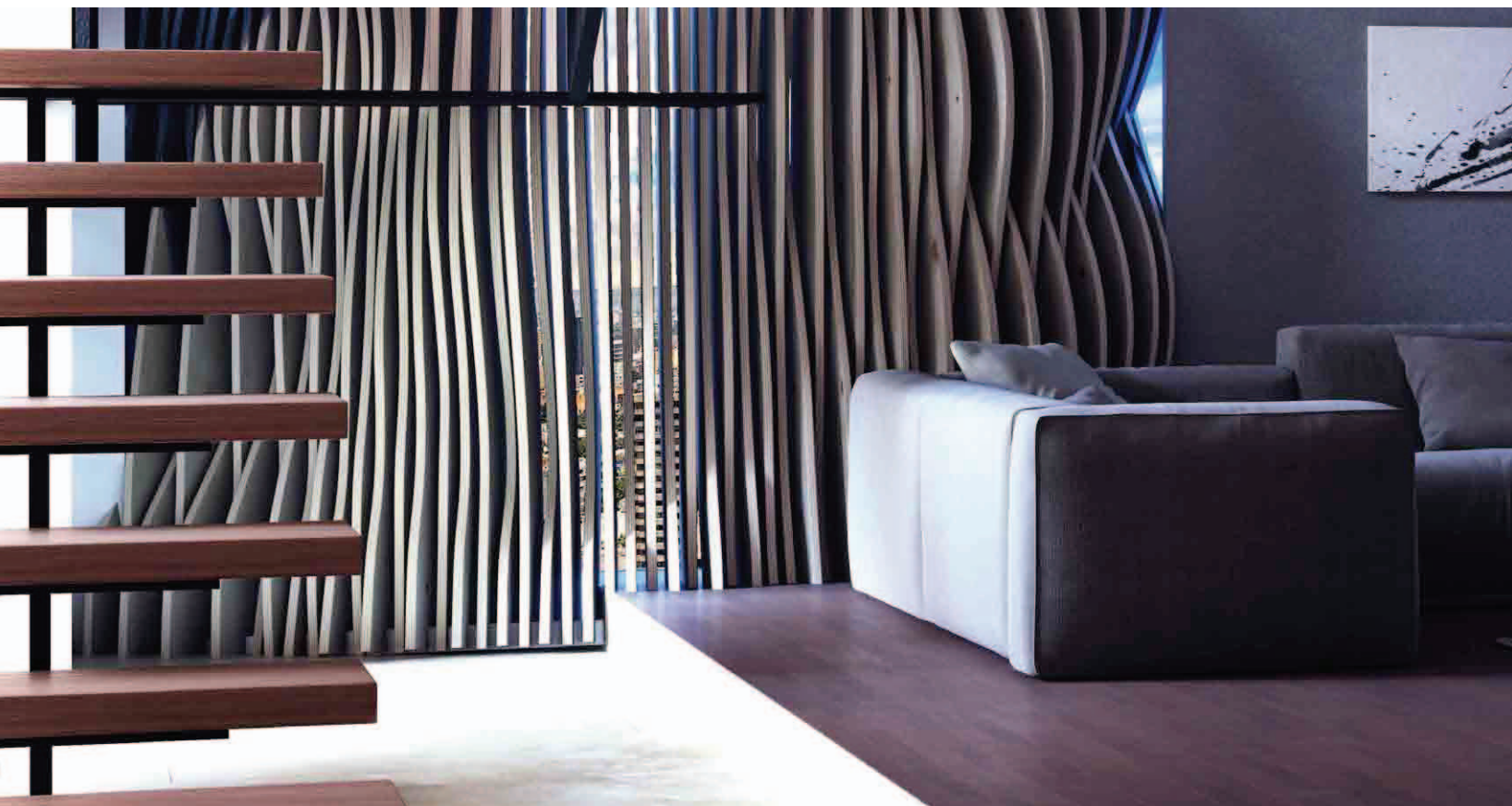
# 2-WIRE AND 2EASY-IPX DOOR ENTRY SYSTEM



## GENERAL CATALOGUE 2021



# VIDEO DOOR PHONES



DX47M (WIFI monitor)  
DT47MG



DX47M1 (WIFI monitor)  
DT471



DT17S



DT433



DJ7A



DT607



DT607F-FE/ID/S4



DMR11S



DT821F/DK



DMR18S



# VIDEO KITS DT17S

2 wires technology



## 1 & 2 apartments



### KIT DK1711.1 APT. VIDEO KIT

DT607C/ID-S1	Outdoor Station *1(105° camera)
DT17S	Indoor Units *1
DR-60-24	Power Supply with UL approved *1
DT-DPS-DR	Power Separator *1
DS-ERL	Relay*1
DIN Rail	
AC Cord	AWG18 Power Cable *1
HL-3 KEYFOBS	Proximity keyrings *5

### KIT DK1721.1 APT. VIDEO KIT

Same as in ref.1711 but with 2 monitors.



### KIT DK1722.2 APT. VIDEO KIT

DT607C/ID-S2	Outdoor Station *1(105° camera)
DT17S	Indoor Units *2
DR-60-24	Power Supply with UL approved *1
DT-DPS-DR	Power Separator *1
DS-ERL	Relay*1
DIN Rail	
AC Cord	AWG18 Power Cable *1
HL-3 KEYFOBS	Proximity keyrings *5

## 3, 4, 6 & 8 apartments



### KIT DK1731S.3 APT. VIDEO KIT

DMR11S/ID/S3	Outdoor Station *1 (170° camera)
DT17S	Indoor Units *3
RH-MR11	Surface Box *1
DR-60-24	Power Supply with UL approved *1
DT-DPS-DR	Power Separator *1
DT-DBC4A1	4 Outputs Controller *1
DS-ERL	Relay*1
DIN Rail	
AC Cord	AWG18 Power Cable *1
HL-3 KEYFOBS	Proximity keyrings *6



### KIT DK1741S.4 APT. VIDEO KIT

DMR11S/ID/S4	Outdoor Station *1 (170° camera)
DT17S	Indoor Units *4
RH-MR11	Surface Box *1
DR-60-24	Power Supply with UL approved *1
DT-DPS-DR	Power Separator *1
DT-DBC4A1	4 Outputs Controller *1
DS-ERL	Relay*1
DIN Rail	
AC Cord	AWG18 Power Cable *1
HL-3 KEYFOBS	Proximity keyrings *8



### KIT DK1761S.6 APT. VIDEO KIT

DMR11S/ID/D6	Outdoor Station *1 (170° camera)
DT17S	Indoor Units *6
RH-MR11	Surface Box *1
DR-60-24	Power Supply with UL approved *1
DT-DPS-DR	Power Separator *1
DT-DBC4A1	4 Outputs Controller *2
DS-ERL	Relay*1
DIN Rail	
AC Cord	AWG18 Power Cable *1
HL-3 KEYFOBS	Proximity keyrings *12



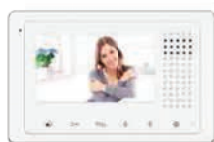
### KIT DK1781S.8 APT. VIDEO KIT

DMR11S/ID/D8	Outdoor Station *1 (170° camera)
DT17S	Indoor Units *8
RH-MR11	Surface Box *1
DR-60-24	Power Supply with UL approved *1
DT-DPS-DR	Power Separator *1
DT-DBC4A1	4 Outputs Controller *2
DS-ERL	Relay*1
DIN Rail	
AC Cord	AWG18 Power Cable *1
HL-3 KEYFOBS	Proximity keyrings *16

# VIDEO KITS DT433

2 wires technology

## 1, 2, 3 & 4 apartments

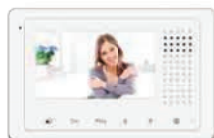


### KIT DK43311.1 APT. VIDEO KIT

DT607C/ID/S1/RH	Outdoor Station *1 (170° camera)
DT433	Indoor Units *1
DR-60-24	Power Supply with UL approved *1
DT-DPS-DR	Power Separator *1
DS-ERL	Relay*1
DIN Rail	
AC Cord	AWG18 Power Cable *1
HL-3 KEYFOBS	Proximity keyrings *5

### KIT DK43321.1 APT. VIDEO KIT

Same as in ref.4311 but with 2 monitors.



### KIT DK43322.2 APT. VIDEO KIT

DT607C/ID/S2/RH	Outdoor Station *1 (170° camera)
DT433	Indoor Units *2
DR-60-24	Power Supply with UL approved *1
DT-DPS-DR	Power Separator *1
DS-ERL	Relay*1
DIN Rail	
AC Cord	AWG18 Power Cable *1
HL-3 KEYFOBS	Proximity keyrings *5



### KIT DK43331.3 APT. VIDEO KIT

DT607C/ID/S3/RH	Outdoor Station *1 (170° camera)
DT433	Indoor Units *3
DR-60-24	Power Supply with UL approved *1
DT-DPS-DR	Power Separator *1
DT-DBC4A1	4 Outputs Controller *1
DS-ERL	Relay*1
DIN Rail	
AC Cord	AWG18 Power Cable *1
HL-3 KEYFOBS	Proximity keyrings *6



### KIT DK43341.4 APT. VIDEO KIT

DT607C/ID/S4/RH	Outdoor Station *1 (170° camera)
DT433	Indoor Units *4
DR-60-24	Power Supply with UL approved *1
DT-DPS-DR	Power Separator *1
DT-DBC4A1	4 Outputs Controller *1
DS-ERL	Relay*1
DIN Rail	
AC Cord	AWG18 Power Cable *1
HL-3 KEYFOBS	Proximity keyrings *8



## 6 & 8 apartments



### KIT DK43361S.6 APT. VIDEO KIT

DMR11S/ID/D6	Outdoor Station *1 (170° camera)
DT433	Indoor Units *6
RH-MR11	Surface Box *1
DR-60-24	Power Supply with UL approved *1
DT-DPS-DR	Power Separator *1
DT-DBC4A1	4 Outputs Controller *2
DS-ERL	Relay*1
DIN Rail	
AC Cord	AWG18 Power Cable *1
HL-3 KEYFOBS	Proximity keyrings *12



### KIT DK43381S.8 APT. VIDEO KIT

DMR11S/ID/D8	Outdoor Station *1 (170° camera)
DT433	Indoor Units *8
RH-MR11	Surface Box *1
DR-60-24	Power Supply with UL approved *1
DT-DPS-DR	Power Separator *1
DT-DBC4A1	4 Outputs Controller *2
DS-ERL	Relay*1
DIN Rail	
AC Cord	AWG18 Power Cable *1
HL-3 KEYFOBS	Proximity keyrings *16



# WIFI KITS DX47M

2 wires technology

## 1, 2, 3 & 4 apartments



### KIT DX4711M/ID.1 APT. WIFI KIT

DT607FE/ID/S1/RH	Outdoor Station *1 (170° camera)
DX47M	Indoor Units *1
DR-60-24	Power Supply with UL approved *1
DT-DPS-DR	Power Separator *1
DS-ERL	Relay*1
DIN Rail	
AC Cord	AWG18 Power Cable *1
HL-3 KEYFOBS	Proximity keyrings *5



### KIT DX4722M/ID.2 APT. WIFI KIT

DT607FE/ID/S2/RH	Outdoor Station *1 (170° camera)
DX47M	Indoor Units *2
DR-60-24	Power Supply with UL approved *1
DT-DPS-DR	Power Separator *1
DS-ERL	Relay*1
DIN Rail	
AC Cord	AWG18 Power Cable *1
HL-3 KEYFOBS	Proximity keyrings *5



### KIT DX4731M/ID.3 APT. WIFI KIT

DT607FE/ID/S3/RH	Outdoor Station *1 (170° camera)
DX47M	Indoor Units *3
DR-60-24	Power Supply with UL approved *1
DT-DPS-DR	Power Separator *1
DT-DBC4A1	4 Outputs Controller *1
DS-ERL	Relay*1
DIN Rail	
AC Cord	AWG18 Power Cable *1
HL-3 KEYFOBS	Proximity keyrings *6



### KIT DX4741M/ID.4 APT. WIFI KIT

DT607FE/ID/S4/RH	Outdoor Station *1 (170° camera)
DX47M	Indoor Units *4
DR-60-24	Power Supply with UL approved *1
DT-DPS-DR	Power Separator *1
DT-DBC4A1	4 Outputs Controller *1
DS-ERL	Relay*1
DIN Rail	
AC Cord	AWG18 Power Cable *1
HL-3 KEYFOBS	Proximity keyrings *8





## 6 & 8 apartments



### KIT DX4761M/ID.6 APT. WIFI KIT

DMR11S/ID/D6	Outdoor Station *1 (170° camera)
DX47M	Indoor Units *6
RH-MR11	Surface Box *1
DR-60-24	Power Supply with UL approved *1
DT-DPS-DR	Power Separator *1
DT-DBC4R	4 Outputs Controller *2
DS-ERL	Relay*1
DIN Rail	
AC Cord	AWG18 Power Cable *1
HL-3 KEYFOBS	Proximity keyrings *12



### KIT DX4781M/ID.8 APT. WIFI KIT

DMR11S/ID/D8	Outdoor Station *1 (170° camera)
DX47M	Indoor Units *8
RH-MR11	Surface Box *1
DR-60-24	Power Supply with UL approved *1
DT-DPS-DR	Power Separator *1
DT-DBC4R	4 Outputs Controller *2
DS-ERL	Relay*1
DIN Rail	
AC Cord	AWG18 Power Cable *1
HL-3 KEYFOBS	Proximity keyrings *16

# INDOOR MONITOR DX47M1

7 inch screen

## Big TFT Wi-Fi Monitor

Big TFT display with friendly touch screen operation, logic tree-menu structure for a great experience.

- 7 inch TFT touch screen
- Touch sensor button
- Memory function build-in
- Anti-disturb function setting
- Support additional ringer or door bell
- Additional light control or 2nd lock control via DT-RLC
- Support Intercom call, Inner call, Guard unit call
- Support local mode via home wif connect to smart phone, point to point
- Support divert mode via SIP server to connect to smart phone outside



Indicator & microphone



stereo touch button  
high sensitive



guide button



7"high resolution  
TFT screen



## Advanced functional features

### • Divert call

In local mode both monitor and smart phone should connect to same Wi-Fi network at home

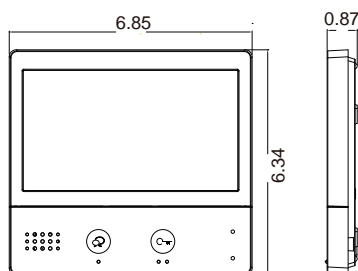
In divert mode monitor should connect to same Wi-Fi network, and smart phone use 4G or connect to another Wi-Fi network

Smart phone is able to control remotely such as unlocking, monitoring, communicating, etc

### • With Memory function

If inserting SD card, the monitor would record videos

If without SD card inside, the monitor would record pictures



Dimension

6.85 x 6.34 x 0.87

(width) x (height) x (depth) inch

# INDOOR MONITOR DX47M

7 inch screen

## Big TFT Wi-Fi Monitor

Big TFT display with friendly touch screen operation, logic tree-menu structure for a great experience.

- 7 inch TFT touch screen
- Touch sensor button
- Memory function build-in
- Anti-disturb function setting
- Support additional ringer or door bell
- Additional light control or 2nd lock control via DT-RLC
- Support Intercom call, Inner call, Guard unit call
- Support local mode via home wif connect to smart phone, point to point
- Support divert mode via SIP server to connect to smart phone outside



super thin design  
only 18mm



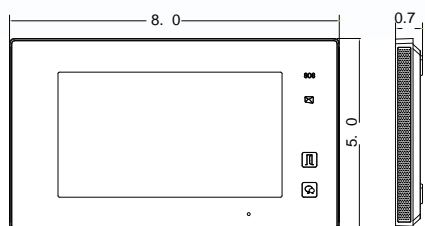
capacitive touch  
screen



touch sensor button  
high sensitive



flat icon menu  
7" TFT screen



Dimension

8.90x5.20x0.71

(width) x (height) x (depth) inch

## Advanced functional features

- Divert call

In local mode both monitor and smart phone should connect to same Wi-Fi network at home

In divert mode monitor should connect to same Wi-Fi network, and smart phone use 4G or connect to another Wi-Fi network

Smart phone is able to control remotely such as unlocking, monitoring, communicating, etc

- With Memory function

If inserting SD card, the monitor would record videos

If without SD card inside, the monitor would record pictures

# INDOOR MONITOR DT47MG

7 inch screen

## Advanced and simple monitor

No matter whether you are at home or traveling: This is a simplified monitor that is able to record videos of your visitors.

DT47MG is a slim 7 inches monitor for houses or apartments offering advanced functions.

Featuring a high tech 7 inches capacitive touch screen, its operation flows naturally through a very intuitive menu-style. The monitor provides comprehensive and effective communication control, security and comfort.

- 7 inch digital color TFT screen
- Touch screen & touch sensor buttons
- Host&Guest Message leave function
- Pantilt & Zoom in/out via fisheye door station
- Picture/video memory



super thin design  
only 18mm



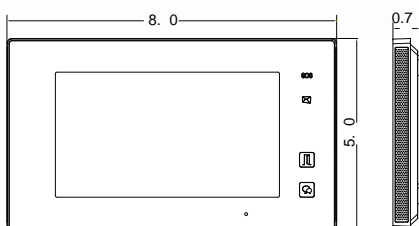
capacitive touch  
screen



touch sensor button  
high sensitive



flat icon menu  
7" TFT screen



Dimension

8.90x5.20x0.71

(width) x (height) x (depth) inch

## Advanced functions

- **Pantilt & Zoom in/out**

Pantilt to see individuals up close.

Zoom in/out to identify everyone at the entrance.

- **SMS & voice message**

Free short messages sending and receiving.

Host and visitor can leave a message each other, controlling the entrance all the time.

- **Motion detection**

Auto-recording when someone approach to the doorway.

Activate relay actuator (light on or release door).

Alert announce when someone gets close.



# INDOOR MONITOR DT17S

7 inch screen

## Simple and intuitive to use

The monitor is easy to use for anyone, it is simple design and easy to install.

With its easy functions and simple menu design, it makes the operation more easy and more intuitive, all operations just touch the sensor buttons.

- Ultra thin design
- Dummy mechanical button-layer design
- Sensitive touch sensor button
- High qualified ABS plastic with signal white color
- Simplified and intuitive menu style



super thin design  
only 17mm



curve button design



touch sensor button  
high sensitive



simple user interface  
7" TFT screen

## Advanced functional features (Must work with DT-IPG, see wiring below)

### • Divert call

Thanks to SIP technology, DT17S is able to divert the call from door station to mobile phone, so remote control such as communicating, unlocking, monitoring can be achieved.

### • Memory function

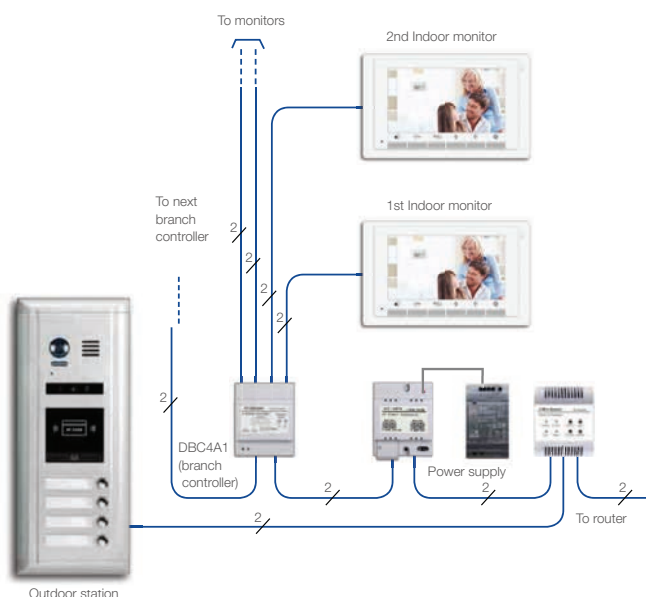
If inserting a SD card into DT-IPG, DT17S would record videos.

If no SD card inside DT-IPG, DT17S would record pictures.

This function is workable on villa or multiple apartments, DT-IPG will generate an individual folder for each apartment, to record pictures or videos.

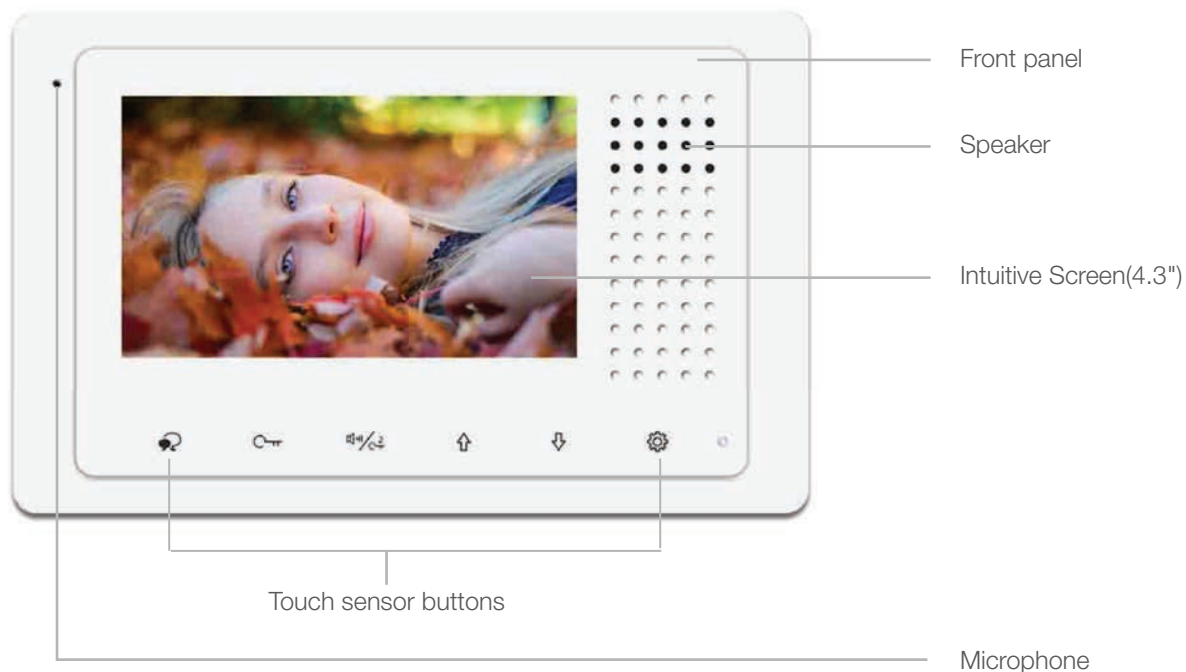
### • Intercom Functions

Included Inner call, Intercom Call, Guard Unit Call.



# INDOOR MONITOR DT433

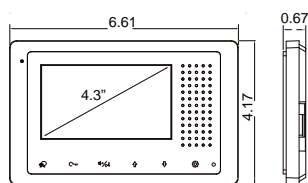
4.3 inch screen



## A new experience

Simple and intuitive design. Its 4.3 inch TFT screen ensures high quality performance, Thanks to its intuitive graphic menu, the user may control each of the function included in the monitor. Step by step.

Its capacitive touch buttons on the panel makes the operation more intuitive and convenient.



Dimension

6.61x4.17x0.67

(width) x (height) x (depth) inch

## Main features

- **Multi language supported**

The operating languages can be customized, it can satisfy different customers needs.

- **Touch sensor button**

It allows smooth activation and great flexibility with high sensitive. All functions may be controlled by these buttons.

- **Slim & Ultra-thin design**

17mm thickness only.

The slim design makes the monitor more smart and its saving room and getting more enjoyable.

- **No bracket mounting**

No anti-disturb function.

# OUTDOOR STATION DT607 SERIES

Wide angle camera entry panel



## DT607C entry panel



DT607C/ID-S1



DT607C/ID-S2



DT607C/ID-S3



DT607C/ID-S4

- 105° wide angle camera
- Zinc alloy metal
- 1/2/3/4 call buttons
- Proximity access control
- Excellent electroplating and polishing treatment
- Surface wall mounting
- IP54 protection rate

## DT607FE entry panel



DT607FE/ID-S1/RH



DT607FE/ID-S2/RH



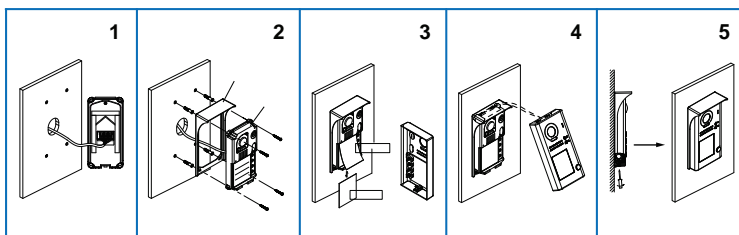
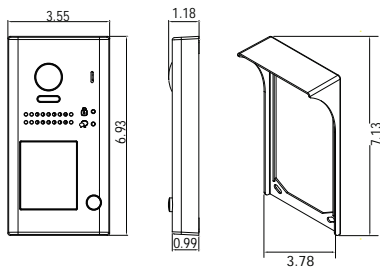
DT607FE/ID-S3/RH



DT607FE/ID-S4/RH

- 170° fish eye camera
- Zinc alloy metal
- 1/2/3/4 call buttons
- Proximity access control
- Excellent electroplating and polishing treatment
- Surface wall mounting with rainy cover

## Dimensions/installation(unit:inch)



# OUTDOOR STATION DT607F SERIES

Wide angle camera entry panel



## DT607CF entry panel



DT607CF-ID/S1

DT607CF-ID/S2

- 105° wide angle camera
- Zinc alloy metal
- 1/2 call buttons
- Proximity access control
- Excellent electroplating and polishing treatment
- Flush mounting
- IP54 protection rate

## DT607F-FE entry panel



DT607F-FE/ID/S1

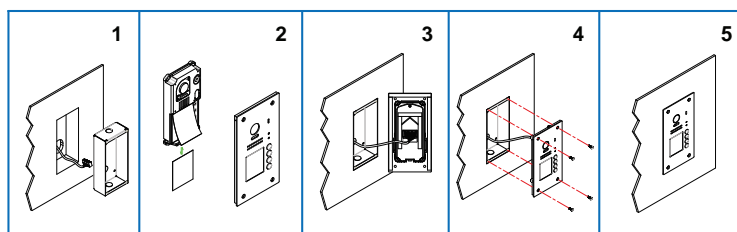
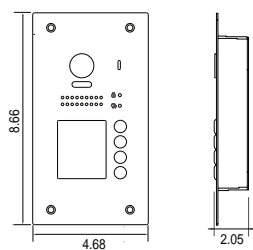
DT607F-FE/ID/S2

DT607F-FE/ID/S3

DT607F-FE/ID/S4

- 170° fish eye camera
- Zinc alloy metal
- 1/2/3/4 call buttons
- Proximity access control
- Excellent electroplating and polishing treatment
- Flush mounting

## Dimensions/installation(unit:inch)





# OUTDOOR STATION DMR11S

Direct call buttons entry panel



## Modularized outdoor station

The DMR11S module celebrates the extreme functionality of the design, with rainy cover for surface mounted, wide-angle camera for large area and optical glass lens for better performance.

It allows you to play with the modules and obtain the entry panel most suited to your needs.

- Aluminum alloy panel
- Synthesis language reminder
- Nameplate or name list via TFT modular



170° high resolution  
fisheye camera



work status indicators  
blue light illumination

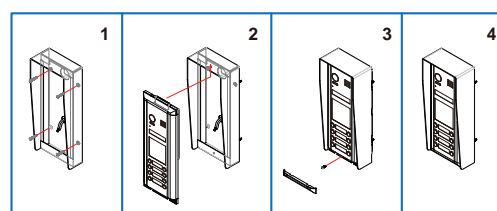
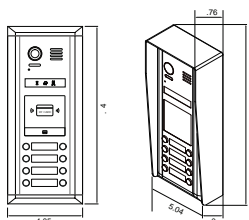


proximity access control  
LED indicator



direct call buttons  
single row/double row

## Dimensions/installation(unit:inch)



# OUTDOOR STATION DT821 SERIES

Modular entry panel



## Modularized outdoor station

Modularize door station allow users to select their own functions, with below modules the door station could call via room number, unlock by 13.65Mhz and 125Khz cards, or simply just call by metal touch button.



**821-VD**

Main camera module



**821-DR**

Dot display card reader



**821-MK**

Mechanical keypad



**821-S4**

Touch sensor call button



**821-LB**

Backlight info board



**821-BM**

Blank block



2 Modules Door station  
Surface/Flush mounting

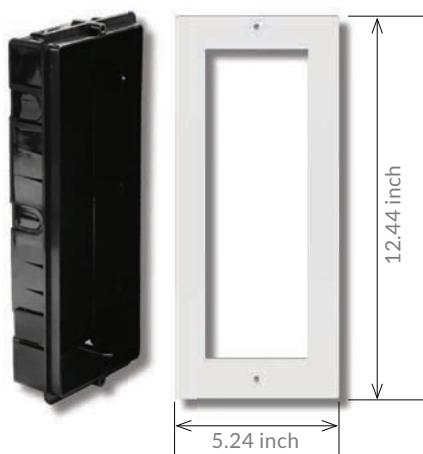


3 Modules Door station  
Surface/Flush mounting

# OUTDOOR STATION DT821 SERIES

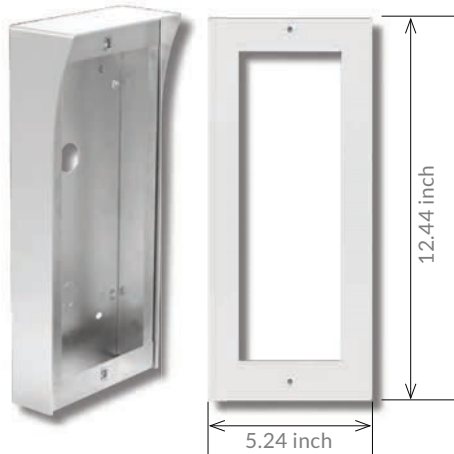
Modular entry panel

## Frame & Mount Box



### 821 3x1-F

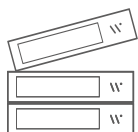
- Flush Mount
- Plastic in-wall mount box
- \*2x1 box is iron
- Stainless steel Frame



### 821 3x1-S

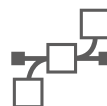
- Aluminum built-in rain cover
- Stainless steel box
- Stainless steel Frame

## Features



### Modularization

- RFID/Pin code access
- Digital tube Display
- Information board



### Easy configure

- Modularize fixing
- Plug and play



### Prompt Voice

- Prompt Voice
- Language customization



### Stainless steel

- 304 Stainless Steel
- Fingerprint-proof



### Water-proof

- IP54 water proof

# OUTDOOR STATION DMR18S

Mechanical keypad entry panel



## Aluminum panel with 3.5" screen

The 3.5 inch screen with user interface makes the settings more convenient and humanitarian, and it is so easy to update the user interface at any time, just with one SD card.

Once the door code is entered, just press the keypad to call the house, it's user-friendly and intuitive.

- New menu-structure design
- Synthesis voice reminder
- Name list display
- Large capacity (up to thousands apartments via DT-IPG)



High resolution camera  
night view LED



navigation buttons  
touch operation

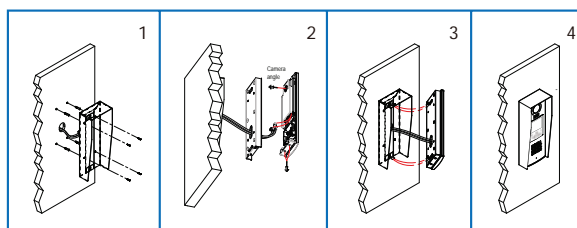
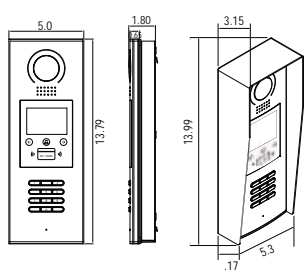


keypad & proximity  
access control



3.5 inch digital TFT  
true color menu

## Dimensions/installation(unit:inch)





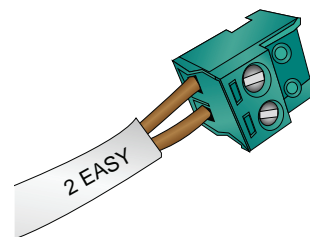
# SYSTEM DESCRIPTION

2 wire non-polarity bus line



## Why '2' easy?

Just two non-polarity wires connection for whole system, including power supply, simple self-learning programming, which makes installation quicker and immediate, it offers a 2Easy work experience/life for installers/end users. Thanks to the technology with high performance, long-distance coverage, high reliability, and low cost make it unbeatable.



## Main features

**All in one:** Power, Audio, Video and control signal, all transmitted by a 2-wire cable.

**Non-polarity:** Never afraid of electric shock.

**Bus transmission:** Expandable and reliable diagram.

**Central power supply:** No black pigtail to home socket.

**Flexible cable:** Existing cable is available(parallel/twisted cable, 18 gauge recommended).



**Antistatic protection**  
Safety & reliable



**Isolation protection**  
Short circuit protection



**Self-learning**  
Lowest labor cost



**Long distance transmission**  
Max.480 meters


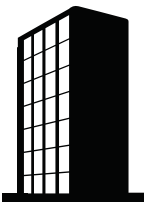



## System application

2-Easyplus will be suitable for many kinds of situation, new construction or renovation of old buildings, single-family or multi-family houses, standalone apartments or high-rise buildings with more than 200 apartments and residential complex.



## System capacitive

 Villa	 Standalone Apartments	 Residential complex
16 Indoor Stations 4 Outdoor Stations 8 CCTV Cameras	<div> <div> <b>Audio system</b>              128 Indoor Stations              4 Outdoor Stations              No distributor is needed           </div> <div> <b>Video system</b>              32 Indoor Stations              4 Outdoor Stations              8 CCTV Cameras           </div> </div> <p>*Video and Audio units can be mixed</p>	199 floor gateway/riser (MAX. 199pcs DT-IPG, each DT-IPG can support 32 indoor stations.) 32 Common Door Stations, can call all indoor stations. 32 Guard Units

## System advanced functions



### Message leave

Host and visitor can leave message each other under home-away mode.



### Call transfer

Call transfer via DT-IPG, it won't miss the call even though you are not at home.



### Intercom function

-Enable/disable the Intercom function;  
 -Selective name list intercom.



### SMS

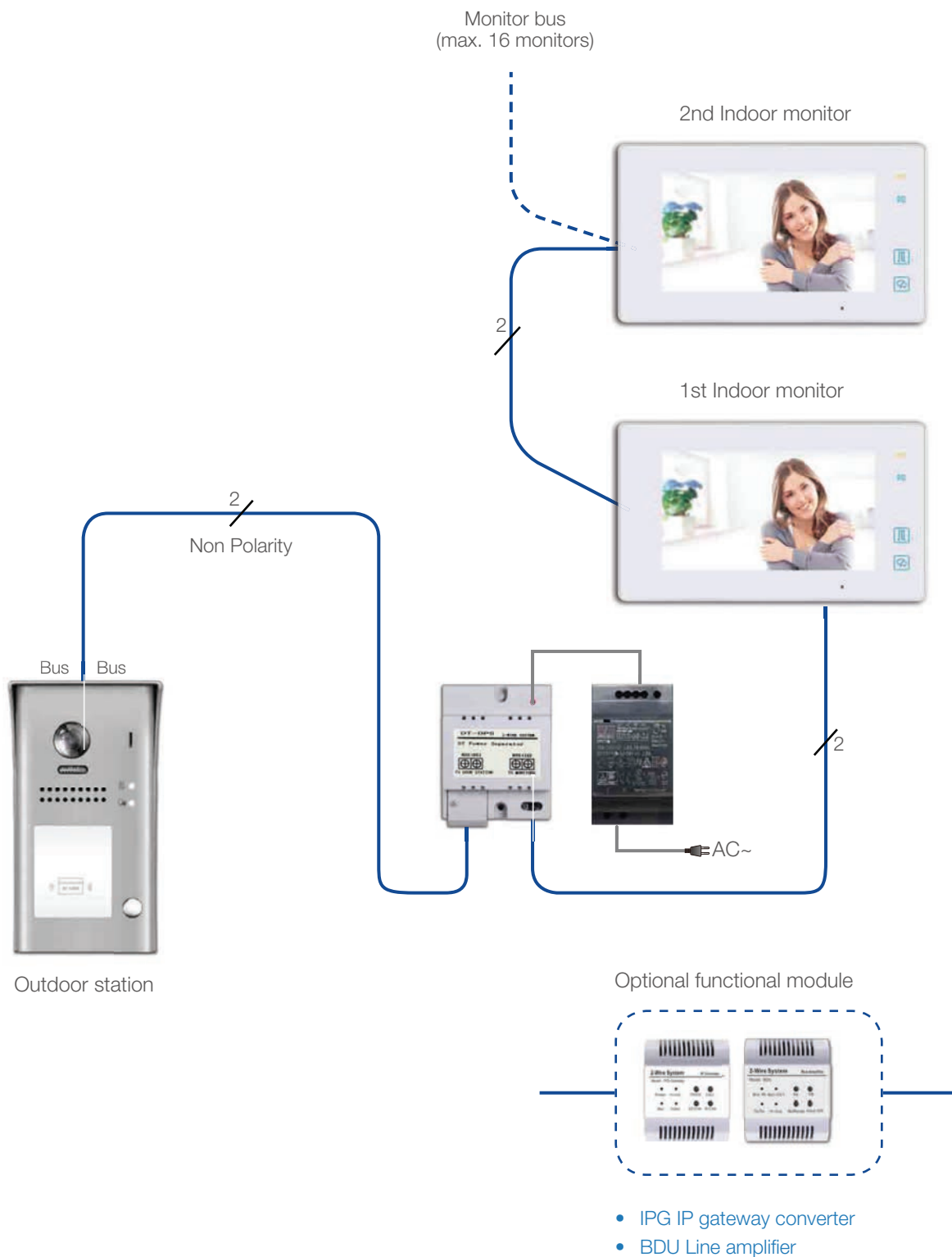
Free short messages sending and receiving among monitors.

# SYSTEM BASIC DIAGRAMS

2 wire non-polarity bus line

## Basic in-out topology wiring mode for villa

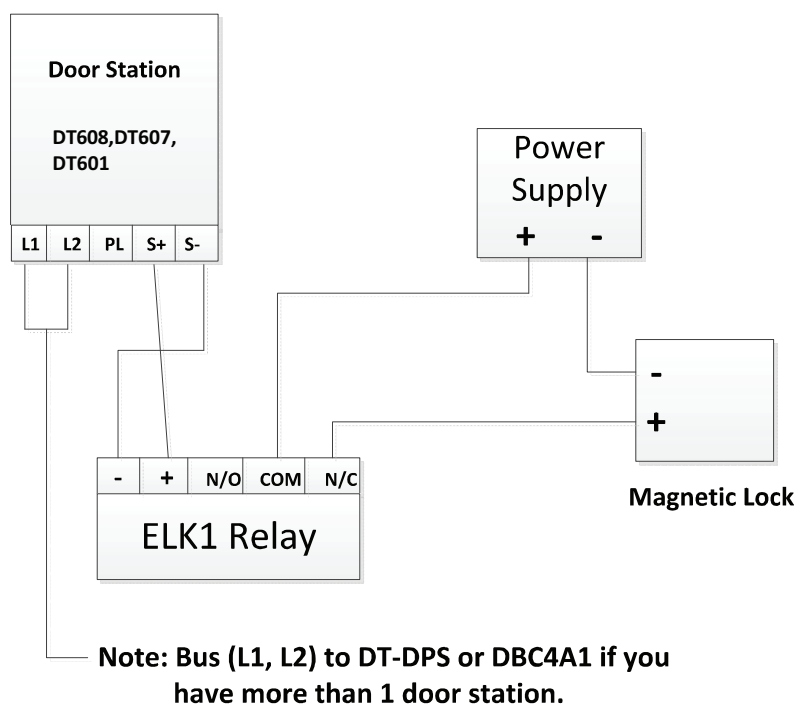
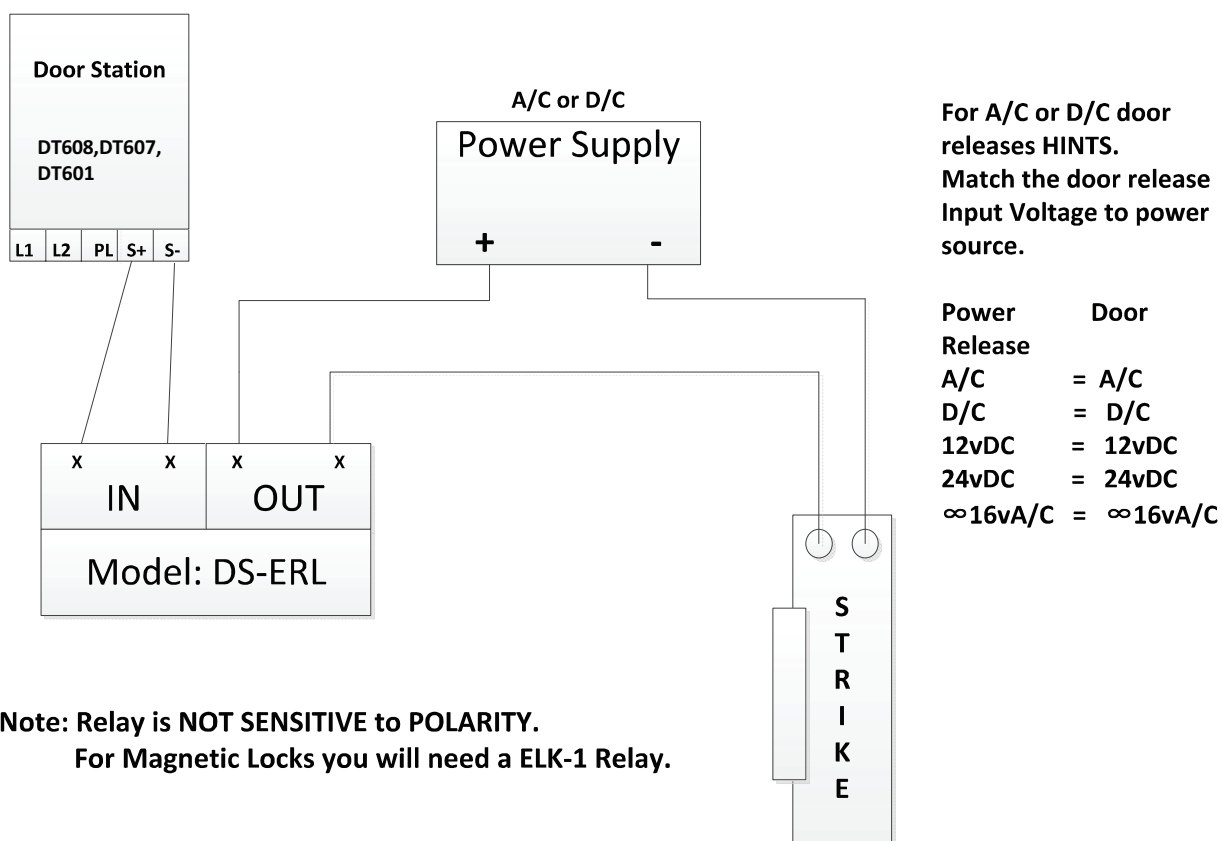
IN-OUT mode is the basic wiring topology. It is used normally, and the quantity of monitor must be less than 16. Video matching is needed in this situation, and the monitor at the end of the line should be matched.



# Hooking up a door release

2 wire non-polarity bus line

## DT608, DT607, DT601



Power Supply can be A/C or D/C as long as it matches the needs of the magnetic lock.

By hooking up the ELK1 to the door release this saves the outdoor station from being damaged which is NOT covered by the warranty!

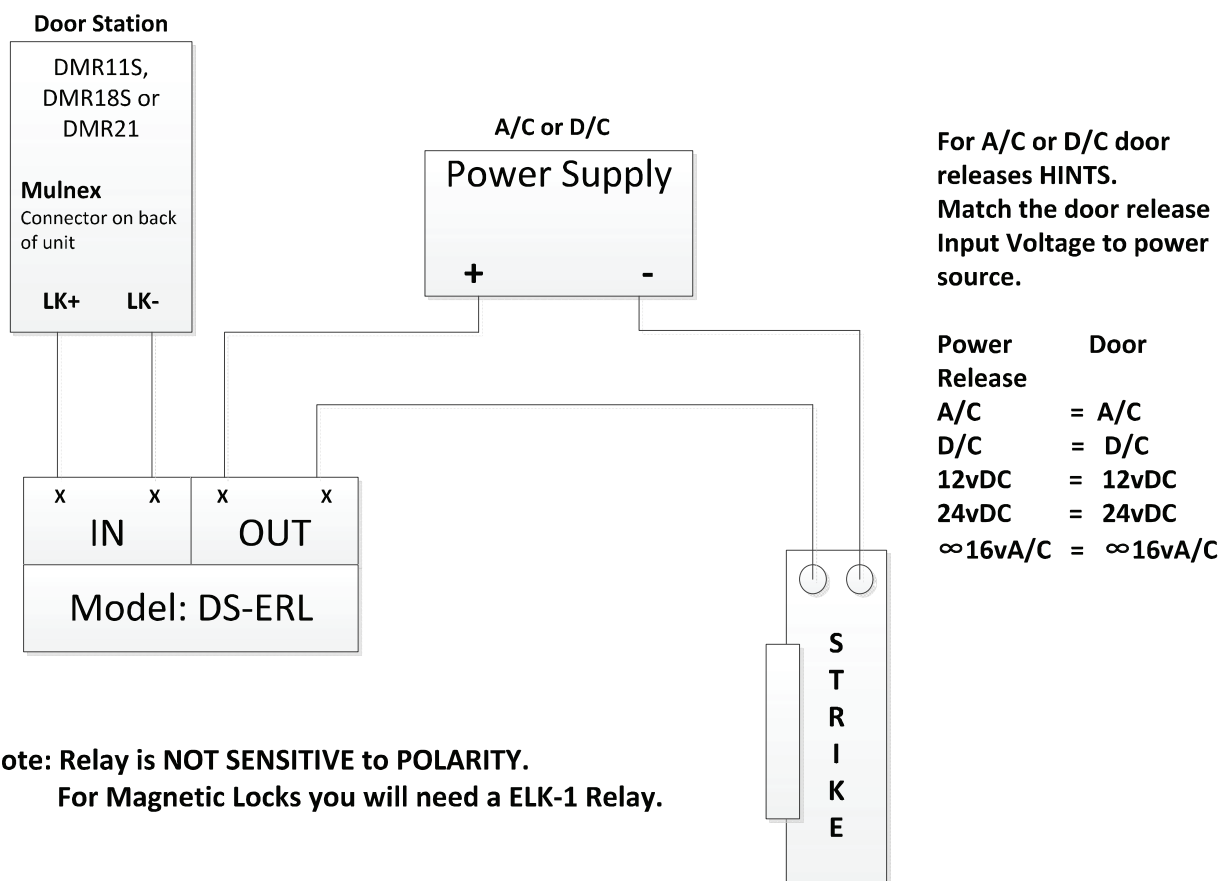
The reason for this is that all Magnetic Locks have more than 200mA and the panel relay Max is 200mA.



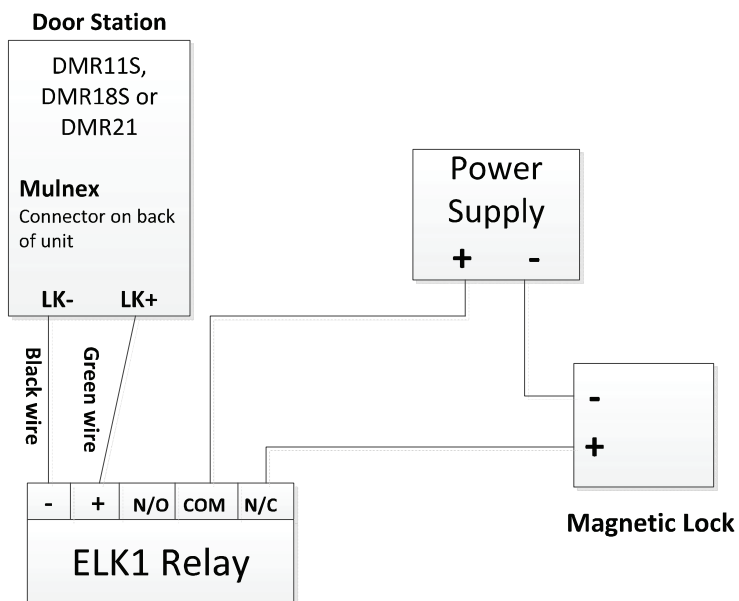
# Hooking up a door release

2 wire non-polarity bus line

## DMR11S, DMR18S, DMR21



**Note: Relay is NOT SENSITIVE to POLARITY.**  
For Magnetic Locks you will need a ELK-1 Relay.



Power Supply can be A/C or D/C as long as it matches the needs of the magnetic lock.

By hooking up the ELK1 to the door release this saves the outdoor station from being damaged which is NOT covered by the warranty!

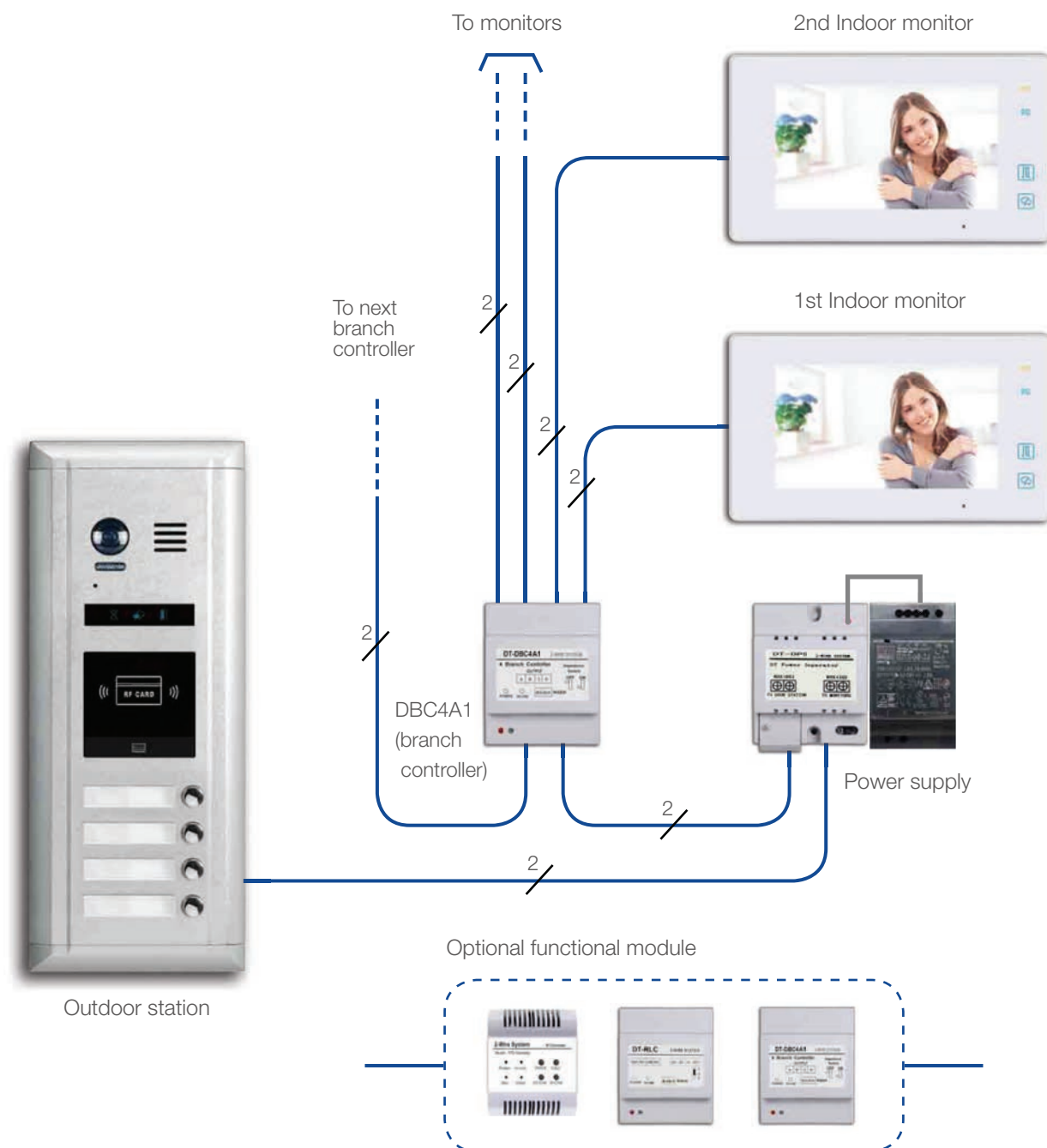
The reason for this is that all Door Stations have spikes in voltage and the panel relay Max is 200mA.

# SYSTEM BASIC DIAGRAMS

2 wire non-polarity bus line

## Basic star wiring mode for apartment

This is the most common way for apartment system. One building shares one common entrance. Each user in the building can not only open the door, but also can intercom with the entrance or other users in the building via the system.(note that max.4 users are available for one branch controller(DBC4A1))

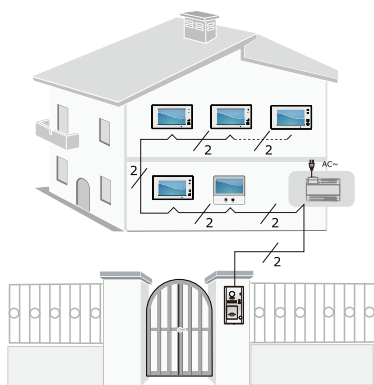


- IPG IP gateway converter
- RLC Staircase light controller module
- DBC4A1 2/4 inputs branch distributor
- DBC4R 4 outputs riser

# SYSTEM BASIC DIAGRAMS

2 wire non-polarity bus line

## Typical wiring in villa application



### Cables and distance

When Monitor quantity < 20

Cable Usage	A	B
Twisted cable 2x0.00116 sq.in	196ft	196ft
Twisted cable 2x0.00155 sq.in	262ft	262ft

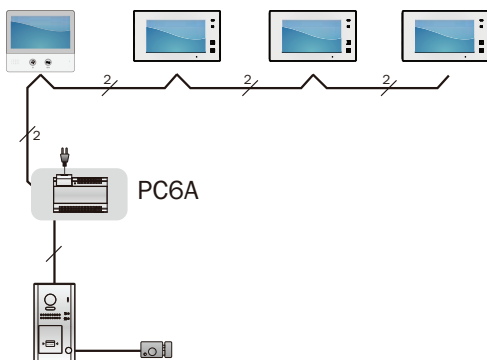
When Monitor quantity > 20

Cable Usage	A	B
Twisted cable 2x0.00155 sq.in	229ft	98ft
Twisted cable 2x0.00233 sq.in	229ft	164ft

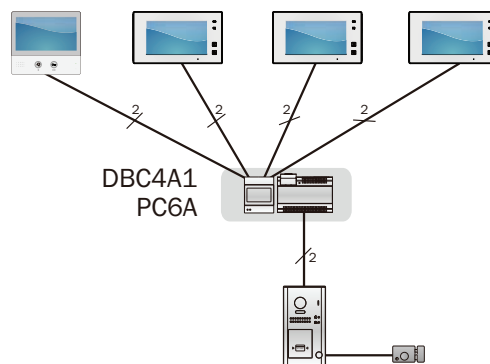
Note:

1. A means the distance from door station to power supply;
2. B means the distance from power supply to the last monitor (or to the last distributor).
3. The thicker the copper wire is, the longer distance will be. Best wire to use is 18 Gauge twisted, while Cat 5 or 6 are not recommended.

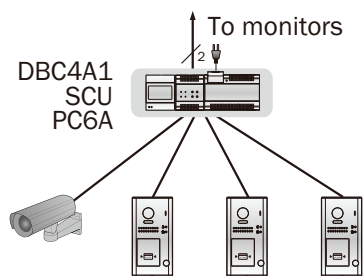
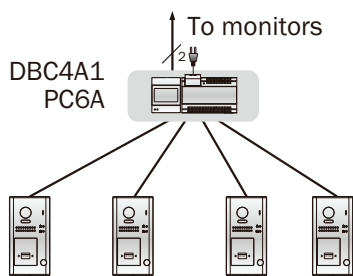
### In-out topology



### Star topology



### Extending door stations/cameras

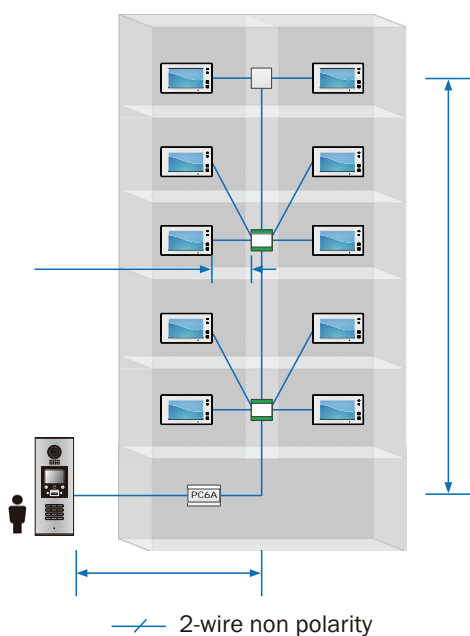


# SYSTEM BASIC DIAGRAMS

2 wire non-polarity bus line

## Typical wiring in apartment application (max.32 families)

### Wiring diagram



### Cables and distance

When Monitor quantity < 20

Cable Usage	A	B	C
Twisted cable 2x0.00116 sq.in	196ft	196ft	98ft
Twisted cable 2x0.00155 sq.in	262ft	262ft	131ft

When Monitor quantity > 20

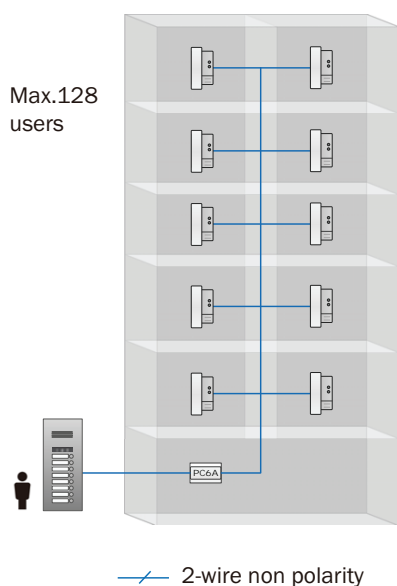
Cable Usage	A	B	C
Twisted cable 2x0.00155 sq.in	229ft	98ft	65ft
Twisted cable 2x0.00233 sq.in	229ft	164ft	98ft

Note:

1. A means the distance from door station to power supply;
  2. B means the distance from power supply to the last monitor (or to the last distributor).
  3. C means the distance from distributor to the monitor.
3. The thicker the copper wire is, the longer distance will be. Best wire to use is 18 Gauge twisted, while Cat 5 or 6 are not recommended.

## 2-Wire audio apartment system

### Wiring diagram



### Audio Apartment System for single block

Solution features:

- Max.128 users in one block ;
- DIP address setting;
- Without accessories except Power supply;
- Cabling in any topology;
- Low cost for general purpose;
- Priority on renovation.

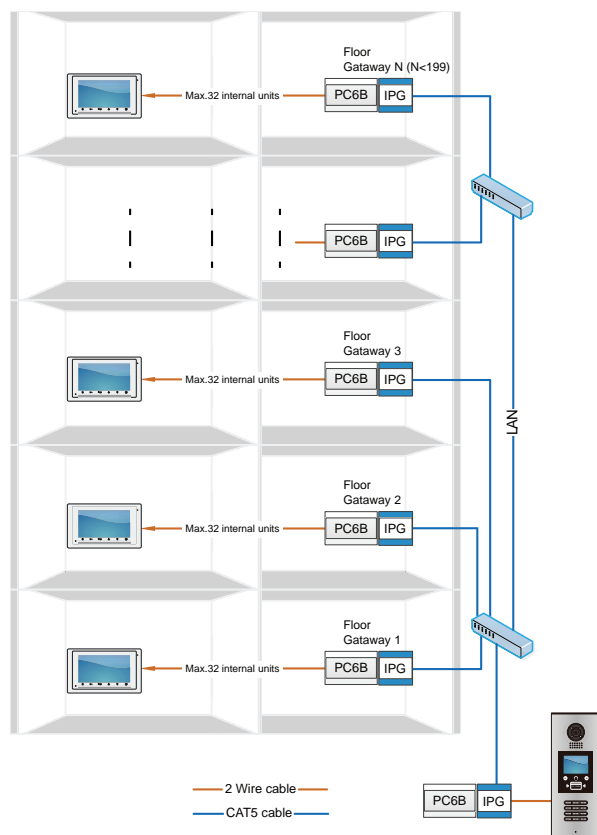


# SYSTEM BASIC DIAGRAMS

2 wire non-polarity bus line

## High rise building system, Video

### Wiring diagram



### Solution Features

- Extendable module design suitable for high rise building
- 2-Wire non polarity/center power in each branch line
- Easy wiring according to electric well
- General Ethernet connection among DT-IPGs

### Device Used

- DT-IPG IP gateway
- DMR18S door stations

### Configurations

- DT-IPGs/Monitors' addressing via DIP switch
- Advanced setting by PC software DX-Builder

## 2EASY-IPX SYSTEM (IPX850(F))

Modular entry panel



### Modularized outdoor station

For small or middle building entry door station, with card and pin code access control for users.



Fingerprint-proof  
Stainless steel surface



5 inch TFT display  
With touch glass screen



All menu could customize  
multi language, user interface



170° wide angle fisheye camera.  
Economical normal camera version\*



Support both 13.56Mhz and 125Khz card.  
Dual car reader



# 2EASY-IPX SYSTEM (IPX610)

IPX Network



## 2EASY-IPX system outdoor station

- Compact design
- Aluminum front panel
- Big backlit push button
- 720P fisheye or Normal lens
- Surface mounting
- IP54 proof



## 2EASY-IPX SYSTEM (IPX471)

7 inch screen

### Big TFT Monitor

Big TFT display with friendly touch screen operation, logic tree-menu structure for a great experience.

- 7 inch TFT touch screen
- Touch sensor button
- Memory function build-in
- Anti-disturb function setting
- Support additional ringer or door bell
- Additional light control or 2nd lock control via DT-RLC
- Support Intercom call, Inner call, Guard unit call
- Support local mode via home wif connect to smart phone, point to point
- Support divert mode via SIP server to connect to smart phone outside



Indicator & microphone



stereo touch button  
high sensitive



guide button



7"high resolution  
TFT screen

### Advanced functional features



#### Transfer

Transfer call to APP



#### Customizable

Logo, Menu, UI



#### Elevator control

Support elevator control



#### Screen

7Inch touch screen



#### Handset

Support handset accessory



#### Alarm

Maximum 8 alarm zones



## 2EASY-IPX SYSTEM (IPX471-HS (Guard Unit))

IPX Network

### Guard Unit



#### Camera View

IPX471-HS could pair with an IP Camera as its' own camera, when calling to other monitor, showing paired IP Camera's image.



#### Handset Optional

IPX471-HS could work with handset or without handset.



#### Desk Mount

Support desk mount, special for secure room or reception.



#### Transfer

Transfer calls to APP when the devices is unattended.



#### Self Manage Access

Add or delete Pin code or Card on monitor only, don't need PC software to manage access control.



#### Sync Name To Doors

End user could set their room name which will be automatically sync to door station.



#### IP Camera Mange

Manage IP camera connected on the system, spy or switch to camera during a call.



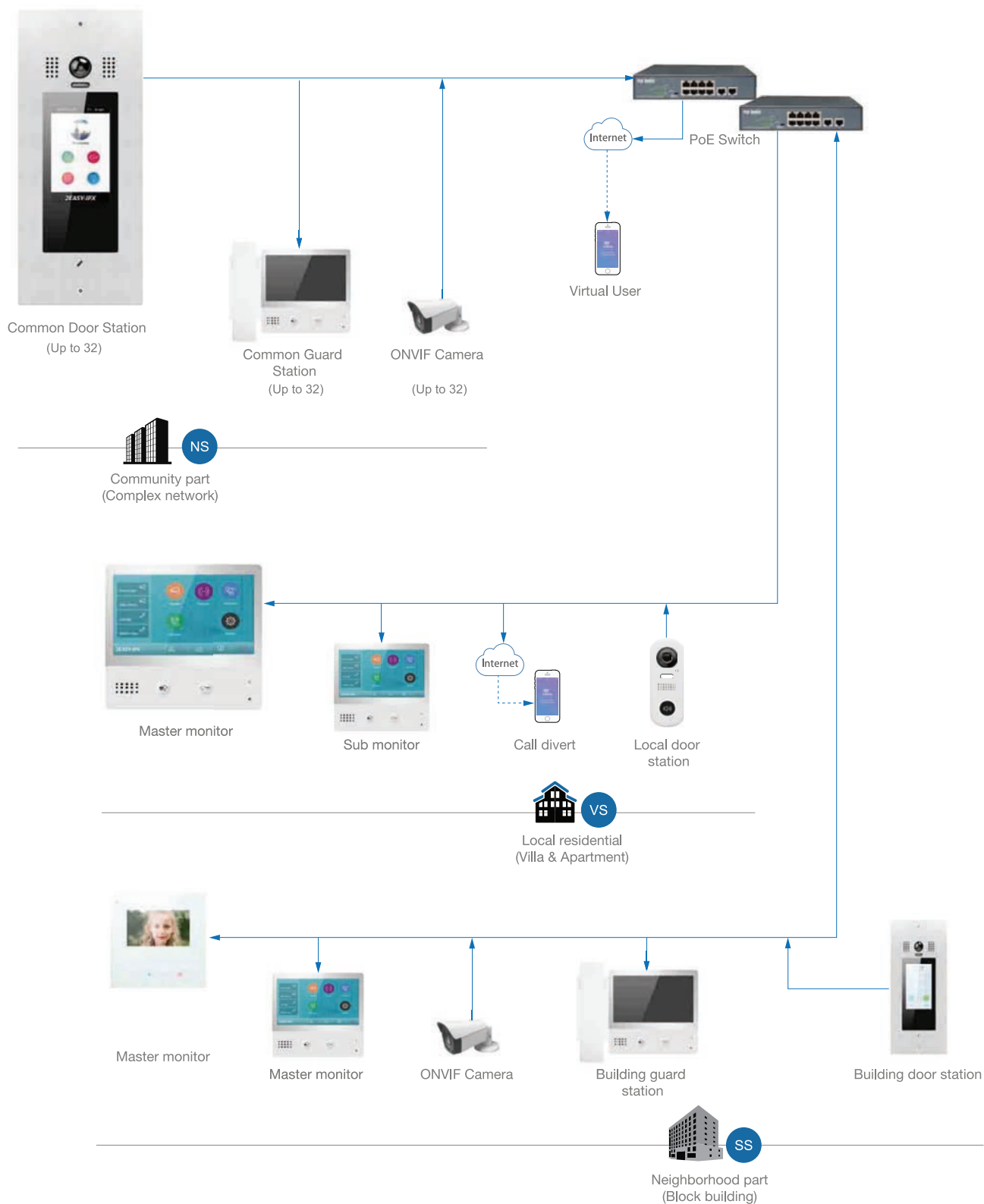
#### Multi Channels

Multi channel allow users to have multi conversation in the same time.

# 2EASY-IPX SYSTEM

IPX Network

## General 2Easy-IPX System Layout



— One CAT5E cable to connect The World —>

# 2EASY-IPX SYSTEM

IPX Network

## Applications

### • Residential



Flexibility & Scalability for needs changes or business expands

### • Commercial



Multi Video& Audio channels with CCTV integration

### • Educational



Video entry and emergency communications

### • Healthcare



after-hour/restrict area access control and intercom

## Advantages

### • Setup IP address automatically

IP address is auto assigned and not associated with Call number

### • Device/Name list created automatically

Auto-scanning mechanism for freely synch

### • Onsite device management tools

Installer mode for advanced setting from door station / monitor

### • Embedded network tools (ping)

Line supervision and device check for online status and functioning

### • External unit auto configuration

Auto setup wizard

## Features

### • PoE (Power over Ethernet)

Standard PoE, no need for extra power supply and cables

### • SIP Divert

Standard SIP Protocol ensures reliable connectivity and compatibility

### • ONVIF IPC connectivity

Integration with most ONVIF IP cameras, for private and public surveillance

### • Work with smart phone

Call divert to mobile phone through CCloud server

### • Update and upgrade

Online upgrading from Internet

## Functions

### • Access control management

Professional code management system for public or individual password

Secure and convenient tag proximity authorization with synch & backup

### • Camera surveillance

Camera search and add-on for quick auto-configuration

Favorite list for fast response

### • Call diverting

Divert to home user in parallel with monitor lit on

Virtual SIP call to specified mobile phone in emergency condition

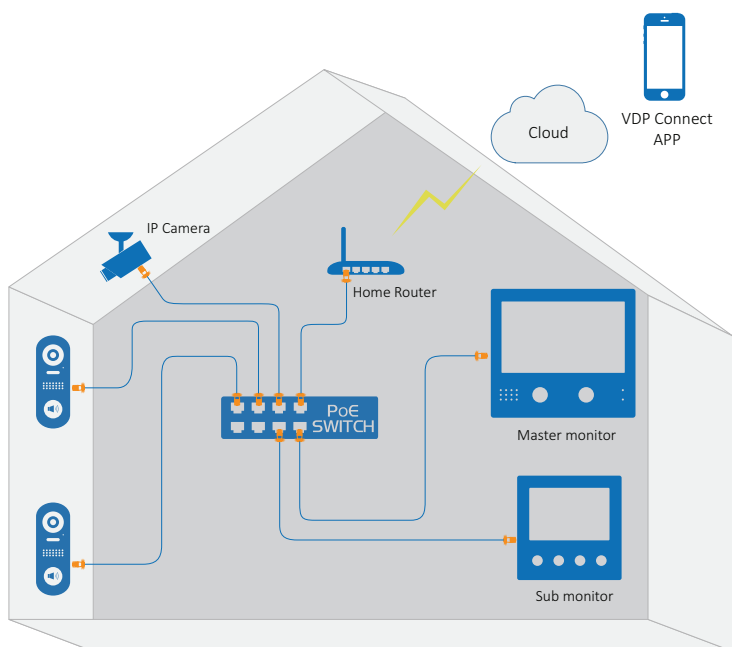
### • Picture memory and call recording

System calling, logs, recording(memory and video)

# 2EASY-IPX SYSTEM

IPX Network

## VS IPX Villa Solution



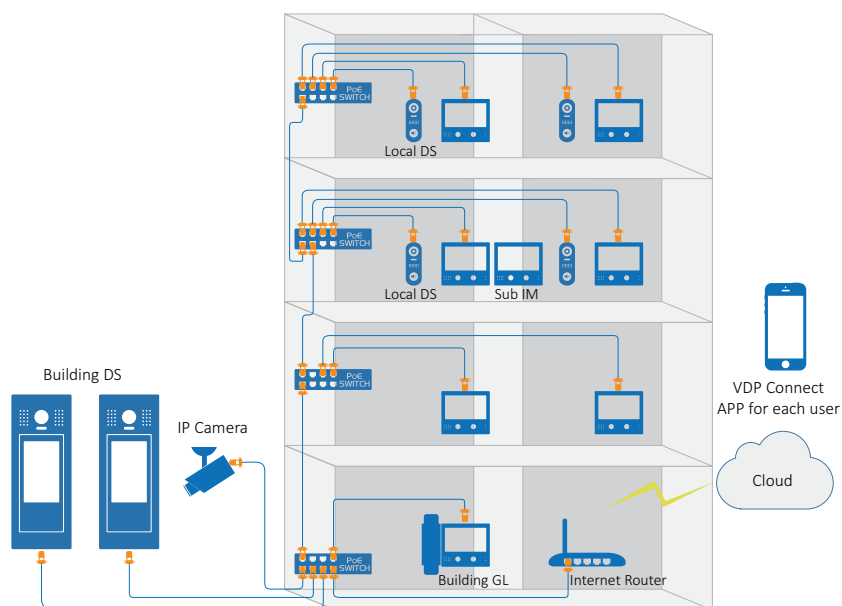
CAT5e: Devices to Switch, max 100M



### Single Family in villa

- Local outdoor stations(L-DS)
- Sub monitors(S-IM)
- Private IP Camera(IPC)

## SS IPX Apartment Solution

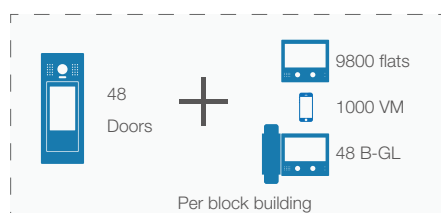


### Block building with multi apartments

- Multi building outdoor station(B-DS)
- Building Guard Stations(B-GL)
- Local outdoor stations for each flat(L-DS)
- Sub monitors for each flat(S-IM)
- Public IP Camera(IPC)
- Virtual user(VM)

\*2/3 layer switch is needed according to devices nos.

CAT5e: Devices to Switch, max100M  
Switch to Switch, max 30M

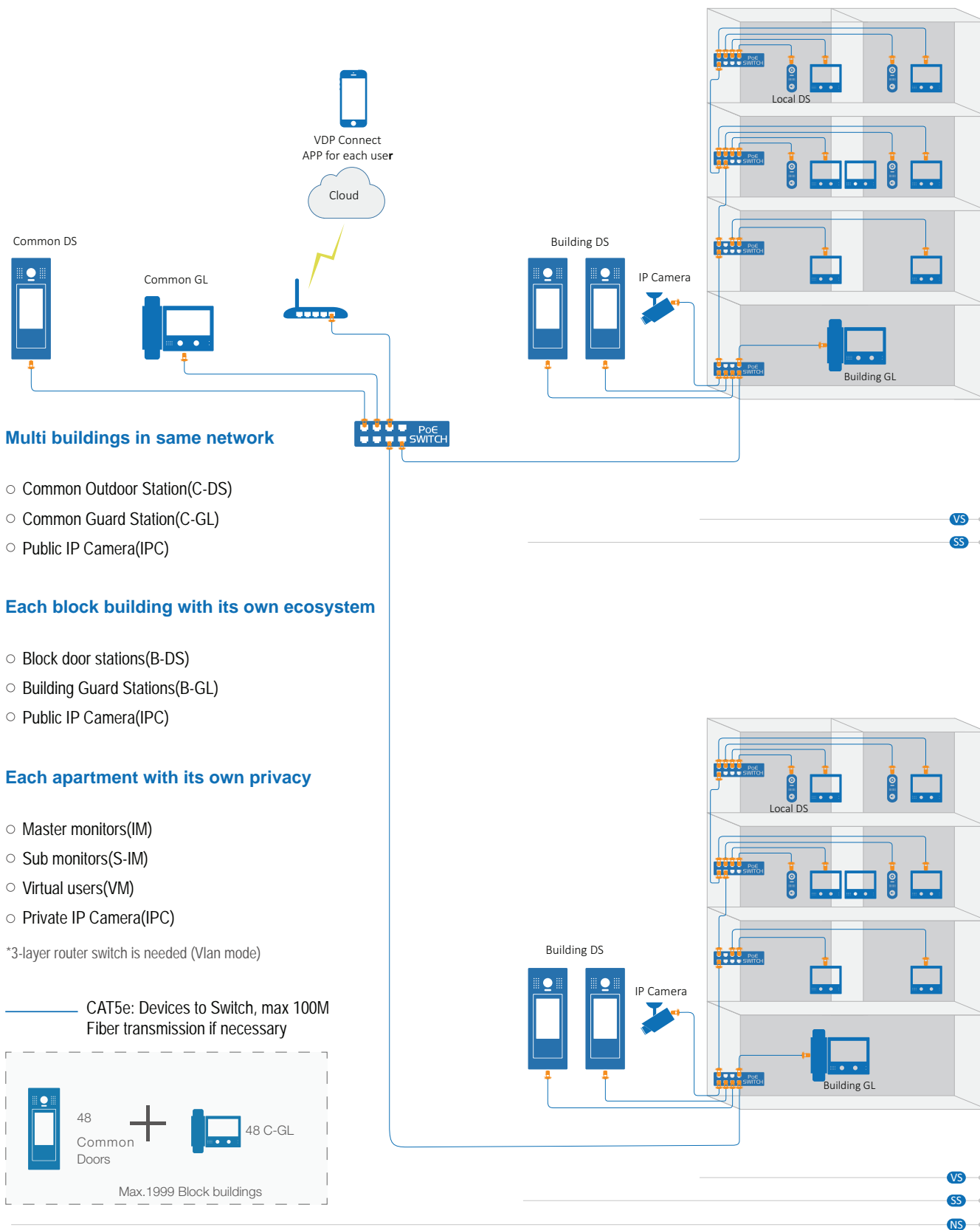




# 2EASY-IPX SYSTEM

IPX Network

## NS IP Complex network solution



# 2EASY-IPX SYSTEM

IPX Network

## IPX Device List

### • Villa door stations

---



#### • IPX610(C) Series

- 720P fisheye or Normal lens
- Aluminum front panel
- Surface mounting
- IP54 proof

LxHxD(inch):2.36\*6.3\*1.24

### • Apartment door stations

---



#### • IPX850(F) Series

- 720P fisheye lens
- 5" touch screen operation
- RFID proximity access
- Stainless steel panel
- Surface or flush mountings
- IP54 proof

LxHxD(inch):4.33\*11.06\*1.73(S)

LxHxD(inch):5.35\*12.91\*1.9(F)



#### • IPX821 Series

- 720P fisheye lens
- Modularization
- Voice Prompt
- Easy Configure
- Fingerprint Proof Stainless Steel
- IP54 Proof

LxHxD(inch):5.24\*9.13\*1.34(2 GANG)

LxHxD(inch):5.24\*12.44\*1.34(3 GANG)

# 2EASY-IPX SYSTEM

IPX Network

## • Indoor monitors

---



### • IPX439

- 4.3" TFT
  - Touch screen
  - Touch sensor key
  - Glass panel
- LxHxD(inch):5.39\*5.39\*0.7



### • IPX471

- 7" TFT
  - Touch screen
  - Touch sensor key
  - Orientation dot
- LxHxD(inch):6.85\*6.34\*0.87

## • Accessories

---



### • PoE Switch

- Unmanaged type
- 4 or 8 PoE outputs
- 10/100Mbps RJ45 ports



### • IPX471-HS (Guard Unit)

- 7" Touch screen
- Handset and hands free mode
- Wall mounting or desktop(Optional)



non-polarity

## Contact us

### NY Wholesale Intercom Group

A New York Corp  
12 Commerce Drive  
Farmingdale New York 11735  
HOURS 9AM - 5PM (MON - FRI)

**Tel** 1 516 - 387 6606

**Fax** 1 516 - 387 6601

[www.nywint.com](http://www.nywint.com)

