

Product Information

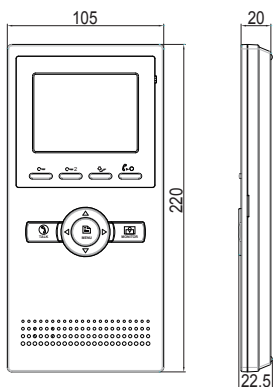
DT16S Series 2-Wire Indoor Monitor



DESCRIPTION

2-wire system 3.5 inch color TFT Monitor

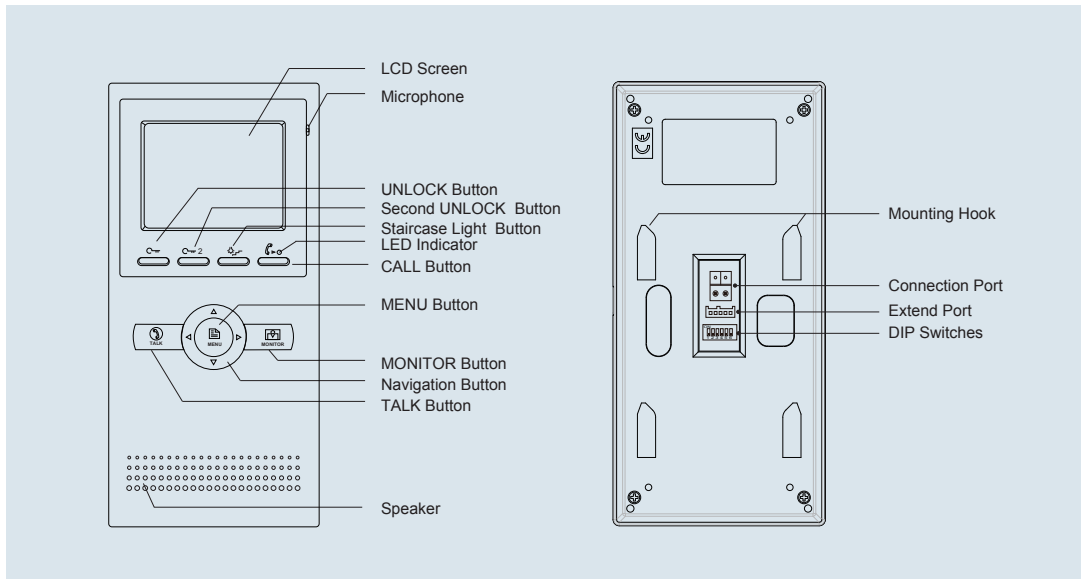
DIMENSION



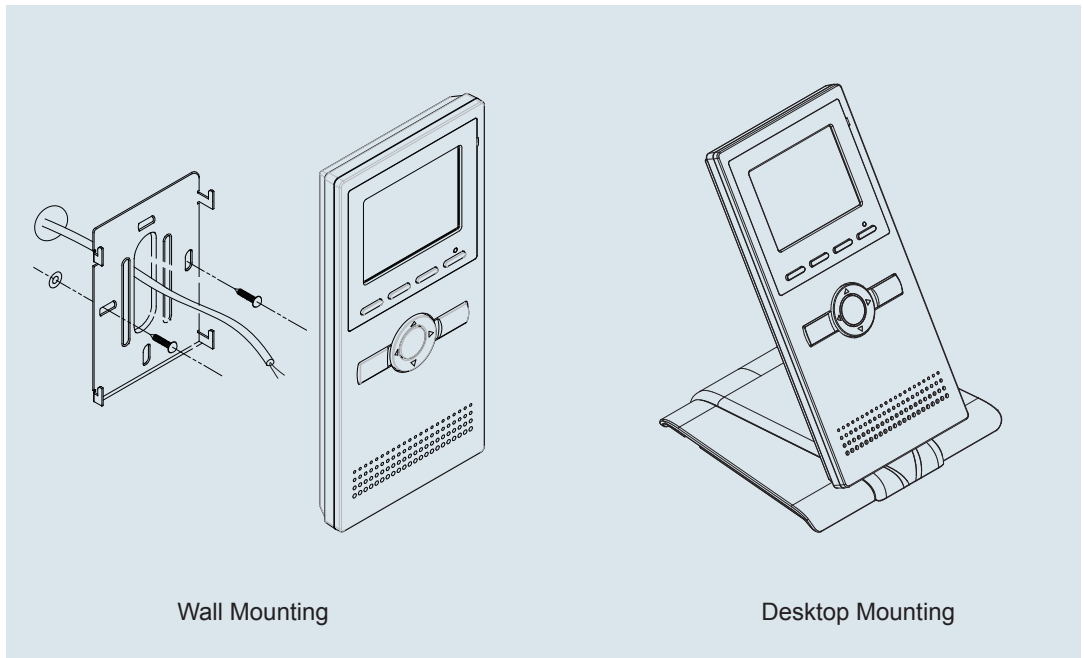
FEATURES

- *1 Plastic housing or Plastic housing with aluminum front panel;
- ▶ Excellent interface experience;
- ▶ Color icon & Text menu;
- ▶ Picture/video memory share via SC6V;
- ▶ Telephone/GSM entry extension;
- ▶ Stronger flexibility of cables usage;
- ▶ Max.16 multi-languages supportable;
- ▶ Compatible with all DT outdoor & Indoor stations ;
- *1 Multi languages operation(customized);
- *1 Depends on models

1. Parts and Functions



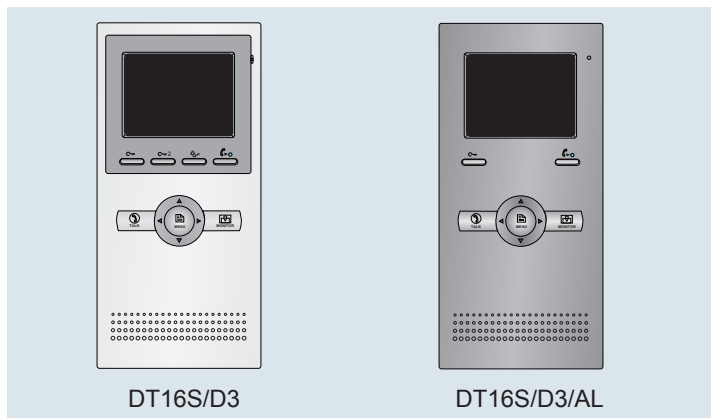
2. Monitor Mounting



3. Specification

- * Power Supply : DC 20~28V ;
- * Power Consumption: Standby 7.51mA; Working status 155mA;
- * Display Device: 3.5 inch Digital TFT screen;
- * Resolution: 320 x 240 pixels;
- * Wiring: 2 wires (non-polarity);
- * Monitor Dimension: 220(H)×105(W)×20(D)mm

4. Ordering Information for Monitor



Model No.	Brief Description	Menu Style
DT16S/D3	3.5 inch digital color TFT screen monitor with white housing	Color Icon & Text menu
DT16S/D3/AL	3.5 inch digital color TFT Screen monitor with aluminum front panel	

5. Optional Accessories (Not included)

Item	Brief Description	Remark
DB1-W	Desk top bracket in white color	For desktop mounting
DB1-B	Desk top bracket in black color	For desktop mounting

6. Packing Information



Dimensions: 249(H)×113(W)×37(D)mm
Gross Weight: 0.39Kg(0.49KG for DT16/D3/AL)



Carton: 530 (H)×340 (W)×258 (D)mm
Quantity: 36PCS

7. App: Menu style



Color Icon & Text Menu Style